

LIUGONG

**936F
939F
942F**

EXCAVATOR

ALL NEW
F-SERIES

936F/936FN/939F/939FN/942F

Engine	L9
Net Power	219kW
Operating Weight	38,600 - 42,800kg
Bucket Capacity	1.8-2.1m ³



TOUGH WORLD. TOUGH EQUIPMENT.



“ THE BEST MACHINES ARE DESIGNED FOR BALANCE, NOT COMPROMISE... ”

YOUR PERFORMANCE DASHBOARD

Research tells us that 6 key performance areas really matter to you. We'd like to use this performance dashboard to present the real, tough facts about our all New 36 - 42T range.



TOUGHNESS & DURABILITY



POWER & EFFICIENCY



INTELLIGENCE & CONTROL



COMFORT & ERGONOMICS



SAFETY & VISIBILITY



UPTIME & MAINTENANCE

With the All New 36 - 42T range we've built a machine which matches your performance criteria exactly. No compromises, just everything you need. It's not rocket science, it's just customer focus matched with intelligent design.

CUSTOMER DRIVEN DESIGN...

Our customers don't like compromise, nor do we. That's why we do our homework before we start the design process to really understand how our machines are actually owned and operated.

This insight allows us to perfectly balance, the demands of the machine owner and the machine operator but without compromise.



RED DOT AWARD-WINNING DESIGN

Our UK design team were recently recognized with a prestigious Red Dot Award for our new 4180D motor grader recognising its innovation and excellence in product design.



HERE'S THE BIG PICTURE...

ALL NEW F-SERIES

936F-942F EXCAVATOR



POWER & EFFICIENCY

NEW

- 3 new power modes - Power, Standard and Eco

IMPROVED

- Cummins VGT technology engine delivers 5% more torque
- 20% increase on slew torque



TOUGHNESS & DURABILITY

NEW

- Heavier duty undercarriage with bilateral supported upper rollers

IMPROVED

- Longer undercarriages & increased counterweight masses
- Extra strong boom & arm - reduces stress by 25%
- 100% flaw detection



INTELLIGENCE & CONTROL

NEW

- Electro-hydraulic control technology
- Boom float technology
- Attachment flow and pressure control



SAFETY & VISIBILITY

NEW

- 360 degree camera
- Ground level daily inspection

IMPROVED

- Anti-slip tread plates and guard rails



UPTIME & MAINTENANCE

IMPROVED

- 1,000h air filter cycle
- Component wear reduced by 70%

NEW

- 5,000 hour long life oil
- Oil bath pre-cleaner option



COMFORT & ERGONOMICS

NEW

- F-Series Ergonomic cab design
- Intuitive operator interfaces & control

IMPROVED

- Quiet (69dBA) and clean (pressurised environment)

NOW FOR THE DETAIL...



“ NO MATTER WHAT YOU DO, YOU’VE GOT TO TRUST YOUR MACHINE 100% ”



TOUGHNESS AND DURABILITY
DESIGNED TO WORK HARDER, FOR LONGER



DESIGNED TO WORK HARDER, FOR LONGER...

To build machines that can withstand the hardest conditions takes intelligent design, and attention to detail. We know that a machine is only as strong as its weakest point, so every weld, every joint, every component is scrutinized to ensure it passes our rigorous durability tests.



TOUGHNESS AND DURABILITY

1. INCREASED LOAD SUPPORT

Upper rollers adopt bilateral support to increase the support and reduce wear

2. EXTRA PROTECTION

Deeper side beams provide higher impact resistance and make it quicker and easier to add additional impact plates if required.

3. EXTRA VIGILANCE

100% flaw detection ensures every weld is checked to meet our stringent standards.

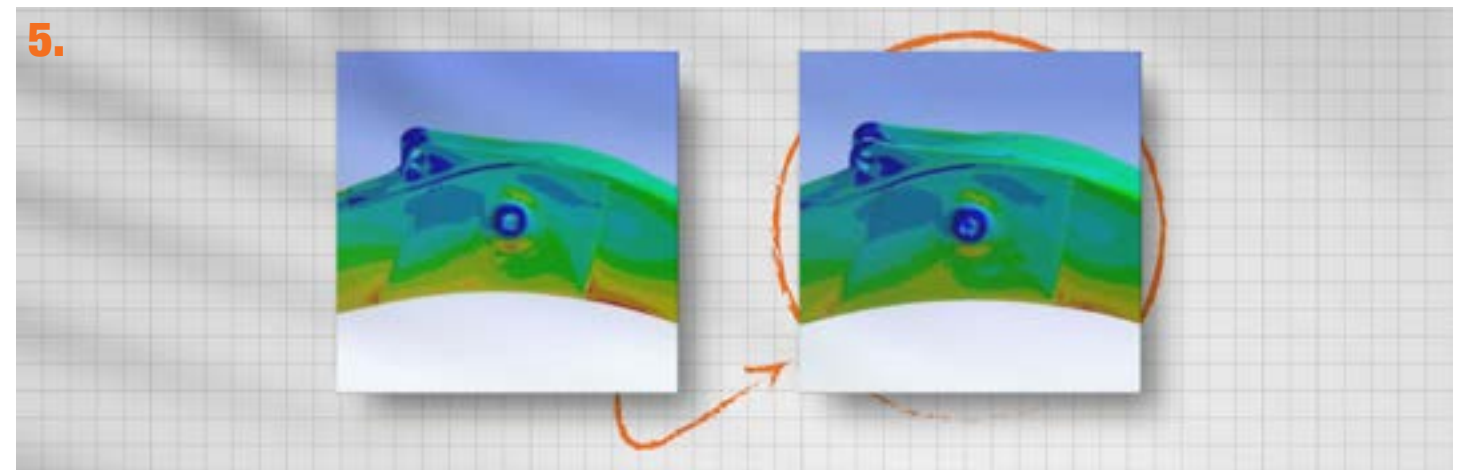
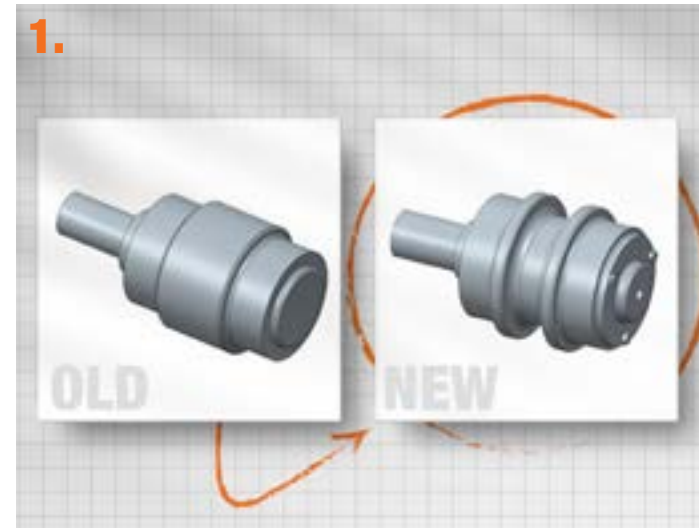
4. INCREASED STABILITY

936F counterweight increased by 700kg to 7.7T

5. TOUGHER BOOM AND ARM

Finite element analysis proves the load efficiency and toughness of our boom and arm, but we go further to reduce stress by 25%.

- Front and rear supports are cast, reducing welds and increasing torsional resistance
- Central ram pivot is forged to reduce stress
- EH hydraulic system reduces hoses and potential leak paths improving long-term performance



PERFORMANCE STATISTICS

1. **+10%** INCREASE IN 936F COUNTERWEIGHT

2. **DEEPER SIDE BEAMS**

5. **25%** STRESS REDUCTION

3. **100%** FLAW DETECTION

TOUGHNESS IS WHAT WE DO...

With over 50,000 excavators already working in the world's toughest environments, you can trust our machines to keep working harder - for longer.





“ WHY CHOOSE BETWEEN POWER AND EFFICIENCY WHEN YOU CAN HAVE BOTH? ”



POWER AND EFFICIENCY
DESIGNED TO MOVE MORE, FOR LESS



DESIGNED TO MOVE MORE, FOR LESS...

There's no need to compromise digging performance to get the highest fuel efficiency because the all New 36 - 42T range gives you both. With greater torque and more power at lower engine speeds you get the power you want and the fuel efficiency you need.



POWER AND EFFICIENCY

1. MORE REAL POWER

With VGT technology, six-cylinder Cummins engines deliver 5% extra torque compared to high torque at low engine speeds. VGT enables the engine to maximize its power output whilst creating less noise and using less fuel.

3. EXCEED YOUR EXPECTATIONS

When it comes to efficiency, the 36 - 42T range is smarter than you'd think. Feed Forward control technology matches the engine's speed to the operator's command and predicted load to deliver even greater fuel economy.

4. BOOSTING YOUR PERFORMANCE

- 23% Increased Slow Torque on 936F/939F/942F
- 9% Increased Travel Motor Power on 942F

EXTRA

- 942F offers increased lift performance with 20 mm larger diameter boom cylinders

2. SAVE EVERY DROP OF FUEL

Engine Auto Idle and Auto Shutdown make every single drop of fuel count. Reducing unproductive fuel saves you money and helps protect the environment.

5. MOVE MORE FOR LESS

We are always improving our performance, with fuel consumption reduced by 10% and efficiency increased by 5% compared to the E Series, we have delivered on that promise.

1.



3.

FEED FORWARD

OPERATOR MOVES JOYSTICK



PREDICTED MACHINE LOAD

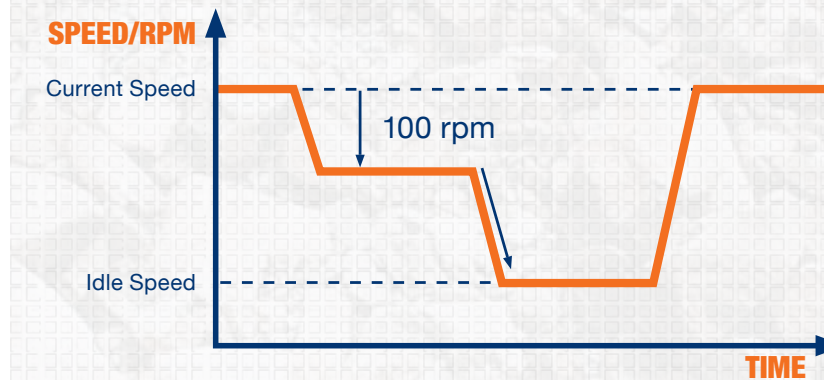
ENGINE FUELLING CORRECTION

ENGINE SPEED DROPS LESS



SHORTER SPEED RECOVERY

2.



PERFORMANCE STATISTICS

1.

+5%

EXTRA TORQUE

5.

+10%

BETTER ON FUEL

5.

+20%

INCREASE ON SLEW TORQUE

WHY COMPROMISE?

The all New 36 - 42T range let's you do more, for less cost, and with less environmental impact, don't settle for anything less.



“ TOUGH MACHINES CAN BE INTELLIGENT TOO ”



INTELLIGENCE AND CONTROL
DESIGNED TO WORK SMARTER



DESIGNED TO WORK SMARTER

Smart operators choose smart machines because they know their job is tough enough. When it comes to intelligence and control the all New 36 - 42T range may surprise you as it's packed with smart features to make life easier.



INTELLIGENCE AND CONTROL

1. CHOOSE YOUR MODE

With a choice of 3 Integrated Work Modes each designed to match the engine speed, pump flow and system pressure to your chosen application, it's easy to find the perfect balance of performance and economy.

3. USE OUR BRAINS

With a suite of Smart functions at your fingertips you can control your attachment properties from the comfort of your cab. It's easy:

- Adjustable flow control
- Adjustable pressure control
- 10 attachment settings

5. WORK SMARTER WITH BOOM FLOAT

Improves performance and prolongs tool life by preventing excessive pressure during braking applications.

Perfect for smooth levelling and deep excavation work, this smart function reduces fuel consumption by allowing the boom to fall under its own mass.

2. ELECTRO-HYDRAULIC CONTROL

The state-of-the-art full electro-hydraulic system from Kawasaki provides lightening fast signals between the joysticks, pumps and valve blocks to deliver pin point precision and maximize available engine power.

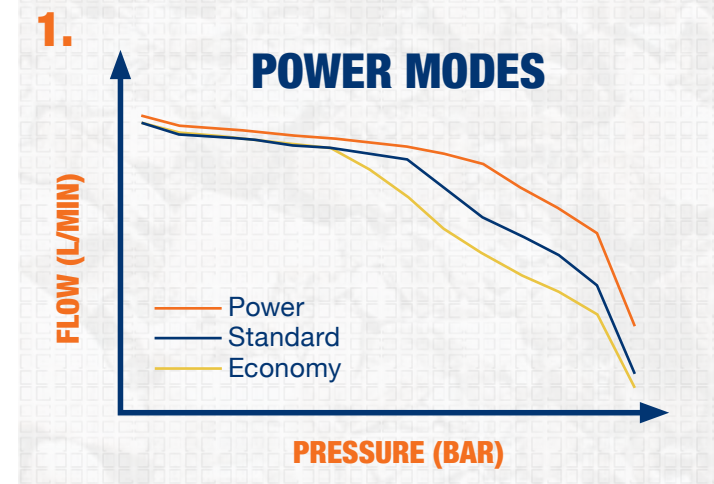
4. INCREASED HYDRAULIC PERFORMANCE

936F/939F/942F features a larger pump with 11% increased flow

1. **ECONOMY (E) MODE**
FOR LIGHT WORK

STANDARD (S) MODE
FOR STANDARD OPERATION

POWER (P) MODE
FOR HEAVY DUTY



SMART IDEAS IN ACTION

The all New 36 - 42T range has the perfect balance of toughness and intelligence designed to keep you in control.

PERFORMANCE STATISTICS

4. **x10** ATTACHMENT SETTINGS

2. **+11%** INCREASE ON 936F / 939F / 942F

1. **x3** DEDICATED POWER MODES

3. **-10%** REDUCTION IN FUEL CONSUMPTION



“ TOUGH DAYS GO FASTER WHEN YOU’RE WORKING IN COMFORT ”

LIUGONG

COMFORT AND ERGONOMICS
DESIGNED AROUND THE OPERATOR



DESIGNED AROUND THE OPERATOR

Climb into the spacious cab and you'll know that it has been designed by a team that really knows what its like to be an operator. Talking, listening and observing operators, our design team spend almost as much time in the cab as they do with the CAD. The result? One of the most ergonomic and comfortable cabs you can get.



COMFORT AND ERGONOMICS

1. PERFECT CONTROL

- From the ergonomically positioned non-slip pedals to the multi-functional joysticks, the cab interior represents a masterclass in design.
- Every action and movement requires the minimum of effort from the operator.
- Boom float, travel speed and proportional auxiliary controls are customizable and finger tip controlled - you can even mute your music!

3. YOUR CHOICE OF SEAT

- Every operator is different, so we offer a range of seats and joystick configurations to suit everyone.
- Mechanical suspension standard seat
 - Comfort level, air suspension seat with adjustable lumbar support.
 - Luxury level, heated air suspension seat with adjustable lumbar and premium padding.

5. IT'S SO QUIET

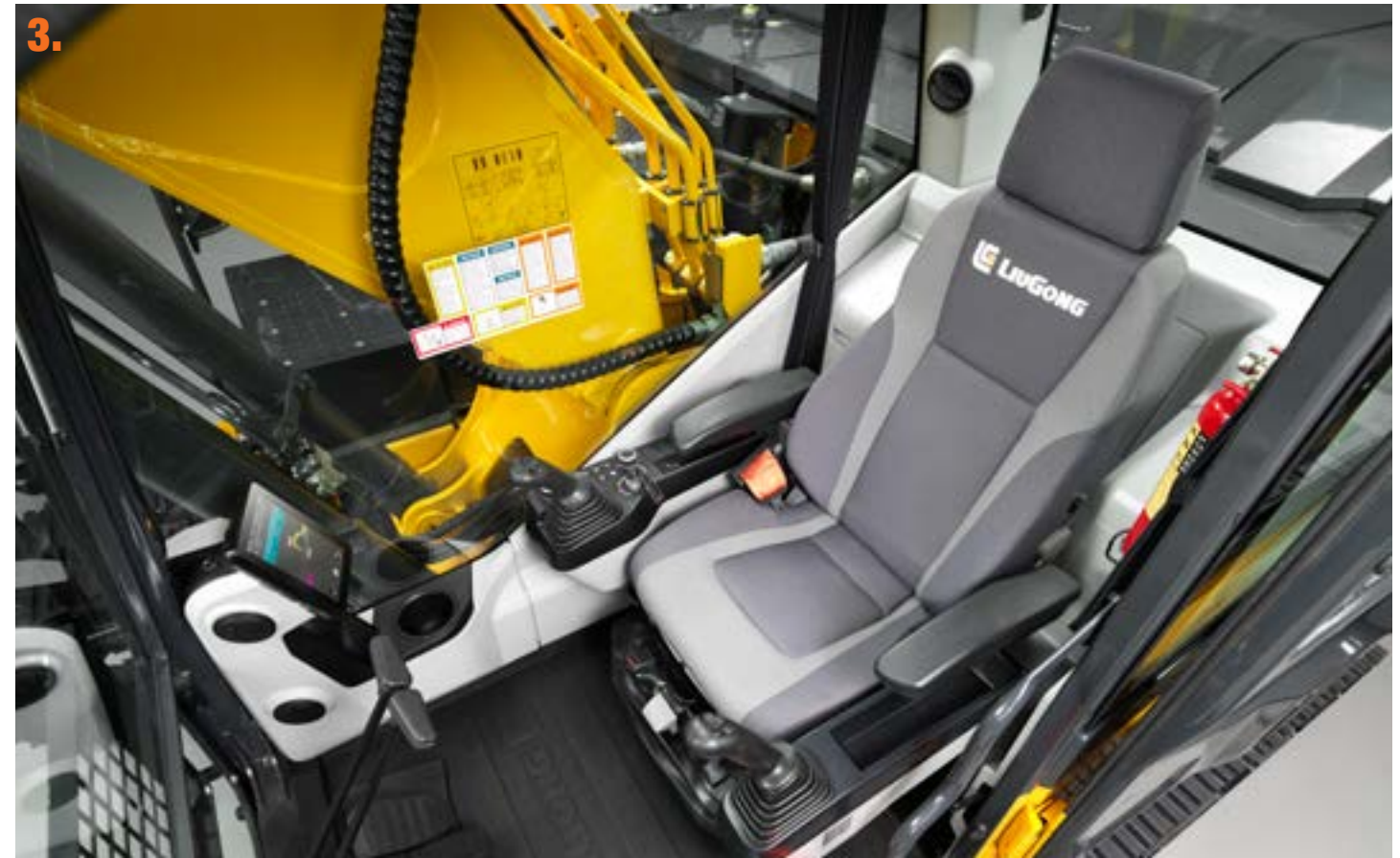
Our latest F Series cabin and sound insulation system dramatically reduces the noise in cab by as much as 6dB.

2. INTUITIVE INTERFACE

We've designed the operator interface to be even more intuitive and easy to use. The large 8-inch LCD colour screen can be controlled via touchscreen or by a fingertip navigational control dial conveniently sited in the armrest control panel.

4. MAKE IT YOUR PLACE

- We never forget that a machine is not just a tool, it's your place for many hours a day (and night). So, we've remembered all the little things that make it feel like home.
- Cool box for food & drinks
 - Large storage box and rack
 - Drinks holder
 - Phone holder with 12V charging, USB and AUX ports



PERFECTLY MATCHED TO YOU

The all New 36 - 42T range gives you the operating environment you would design for yourself.

TICKS ALL THE RIGHT BOXES

- ✓ INTUITIVE LCD OPERATOR CONSOLE
- ✓ FULLY PRESSURIZED (100PA)
- ✓ ENHANCED VISIBILITY
- ✓ CUSTOMIZABLE OPERATING HANDLE
- ✓ ERGONOMIC LAYOUT
- ✓ ADVANCE AIR-CON AND TEMPERATURE CONTROL
- ✓ HIGH COMFORT, FULLY ADJUSTABLE SEAT
- ✓ LOW NOISE AND LOW VIBRATION



“ WE CONSTANTLY ASK... HOW CAN WE MAKE OUR MACHINES EVEN SAFER ”



SAFETY AND VISIBILITY

DESIGNED TO PROTECT



SAFER ALL-ROUND ACCESS

Being protected in the cab is important, but accident research shows us that most accidents occur outside of the machine. We've taken the challenge to make our machines even safer to be around.



SAFETY AND VISIBILITY

1. MORE PROTECTION WHERE YOU NEED IT

The driver protection system delivers even greater protection to the front and top of the cab and protects the operator from falling rocks and debris. The front screen has a hinge design making cleaning and maintenance easier.

2. WATCH YOUR STEP

- The new 0.5m wide stepped boarding channel with non-slip treadplates makes getting on and off the machine safer
- The engine compartment features a gripped access platform.
- Optional guard rails or integral fences on the left and right sides of the upper platform increase safety.

3. EMERGENCY STOP

The ground level emergency stop switch is fitted as standard.

4. BE SAFE. BE SEEN

LED work light for better night visibility is fitted as standard.

5. SEE THE WHOLE SITE

Our cab design provides the operator with the very best view of the site, from every angle. Smart design ideas such as integrating the steps into the line of the cabin, improve visibility on the right hand side giving a 180 degree view.

6. SAFER MAINTENANCE ACCESS

No need to climb on the machine, all the daily maintenance points, including the oil level check point are easily accessible from the ground.

7. NO BLIND SPOTS

With 360 degree camera as standard in Europe, you can get an uninterrupted panoramic view around the machine at all angles from the large LCD screen.



BETTER BY DESIGN

LiuGong's Red Dot Award winning design* team is rapidly building a reputation for un-matched visibility. When you can see more you can do more, whilst protecting yourself and people around the machine.

With the All New products we've pushed the barriers and taken visibility another step forward.

*4180D Motorgrader



reddot design award

YOUR SAFETY - OUR PRIORITY

The all New 36 - 42T range has the perfect balance toughness and intelligence designed to keep you in control.



“ CAN DAILY MAINTENANCE REALLY BE AS SIMPLE AS THIS? ”



UPTIME AND MAINTENANCE

DESIGNED TO BE EASY TO SERVICE AND MAINTAIN



EASY TO OWN AND EASY TO MAINTAIN

We understand that when your machine's not working, it's not earning. To maximize your productive hours, we've made the All New 36 - 42T even easier to maintain, helping you make every productive second count.



MAINTENANCE AND UPTIME

1. FULLY SYNCHRONIZED MAINTENANCE

Maintenance should be simple so to save you time, all engine oil filter replacement cycles have been synchronized.

2. SPACE FOR YOUR KIT

We've increased the storage space behind the cab and added a segregating tray to create a useful space for your maintenance kit such as grease guns and lifting equipment.

3. NO RISK - LOW LEVEL ACCESS

Convenience and safety should never be compromised.

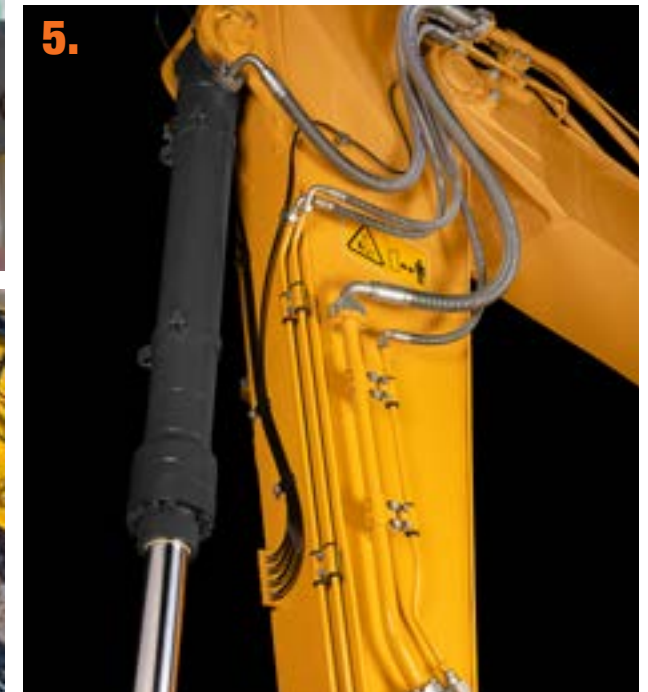
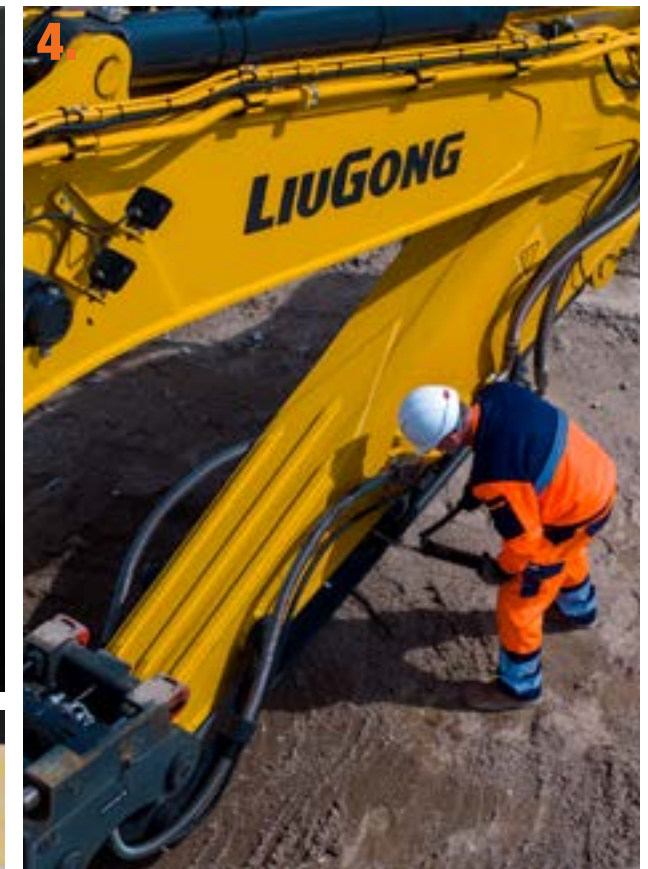
- The easy to access optional re-fuelling pump is safely stowed behind the bay door.
- All filters are located close to the bay doors for safe access and speedy maintenance.
- To aid access to the upper structure, a second access ladder behind the cabin offers additional convenience to the operator.

4. MAKING IT FASTER EVERYDAY

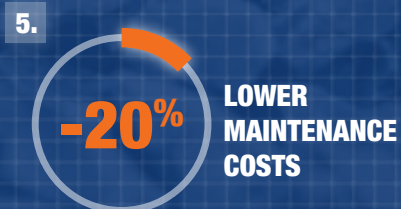
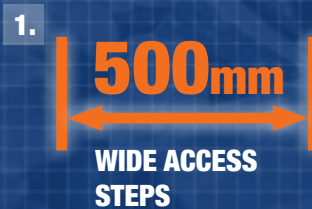
By grouping the greasing points together on the boom base, top of the dipper and slew bearing we make daily maintenance faster and easier. Optional automatic lubrication pipeline gives you easy access to all the lubrication points in one place, saving you even more time on daily maintenance.

5. 5,000 HOUR OIL LIFE

New long life hydraulic oil reduces total cost of ownership and saves service maintenance time.



PERFORMANCE STATISTICS



SPECIFICATIONS



OPERATING WEIGHT

936F	38,800 kg (86,222 lbs)
936FN	38,600 kg (85,098 lbs)
939F	39,800 kg (88,444 lbs)
939FN	39,600 kg (87,303 lbs)
942F	42,800 kg (95,111 lbs)

Operating weight includes coolant, lubricants, full fuel tank, cab, standard shoes, boom, arm, bucket and operator 75 kg (165 lbs).

Bucket Capacity	936F 936FN	1.8 m ³ (2.35 yd ³)
	939F 939FN	2.0 m ³ (2.62 yd ³)
	942F	2.1 m ³ (2.75 yd ³)

HYDRAULIC SYSTEM

Main pump

Type	Load-sensing variable pump
Maximum flow	2 × 351 L/min (2 × 93 gal/min)

Relief valve setting

Implement	34.3 MPa (4,975 psi)
Travel circuit	34.3 MPa (4,975 psi)
Slew circuit	32.4 MPa (4,699 psi)
Pilot circuit	3.5–3.9 MPa (508–566 psi)

Hydraulic cylinders

Boom Cylinder – Bore × Stroke	936F/936FN/939F/939FN	Φ140 × 1,505 mm (Φ5.5" × 4'11")
	942F	Φ160 × 1,505 mm (Φ6.3" × 4'11")
Arm Cylinder – Bore × Stroke		Φ175 × 1,785 mm (Φ6.9" × 5'10")
Bucket Cylinder – Bore × Stroke		Φ160 × 1,250 mm (Φ6.3" × 4'11")

ELECTRIC SYSTEM

System Voltage	24 V
Batteries	2 × 12 V
Alternator	24 V - 70 A
Start motor	24 V-8 kW (24 V- 0.7 hp)

ENGINE

Emission rating	EU Stage V
Engine manufacturer	Cummins
Engine model	L9
Aspiration	Turbo
Charged air cooling	After cooler
Cooling fan drive	Silicon oil clutch variable speed fan
Displacement	8.9 L (2.35 gal)
Rated speed	2,100 rpm
Engine output - net (SAE J1349 / ISO 9249)	219 kW (298 hp)
Engine output - rated (SAE J1995 / ISO 14396)	231 kW (314 hp)
Maximum torque	1,526 N·m (1,126 lbf) @ 1,400 rpm
Bore × Stroke	114 × 145 mm (4.4" × 5.7")

DRIVE AND BRAKES

Description

2-speed axial piston motors with oil disk brakes. Steering controlled by two hand levers with pedals.

Max. travel speed	936F/936FN/939F/939FN	High: 5.5 km/h (3.4 mph) Low: 3.4 km/h (2.1 mph)
	942F	High: 5.5 km/h (3.4 mph) Low: 2.9 km/h (1.8 mph)
Gradeability		35%/70%
Max. drawbar pull	936F/936FN/939F/939FN	320 kN (71,939 lbf)
	942F	350 kN (78,683 lbf)

SWING SYSTEM

Description

Planetary gear reduction driven by high torque axial piston motor, with oil disk brake. Swing parking brake resets within five seconds after swing pilot controls return to neutral.

Swing speed	936F/936FN/939F/939FN	10 rpm
	942F	9.8 rpm
Swing torque		142,000 N·m (104,734 lbf-ft)

UNDERCARRIAGE

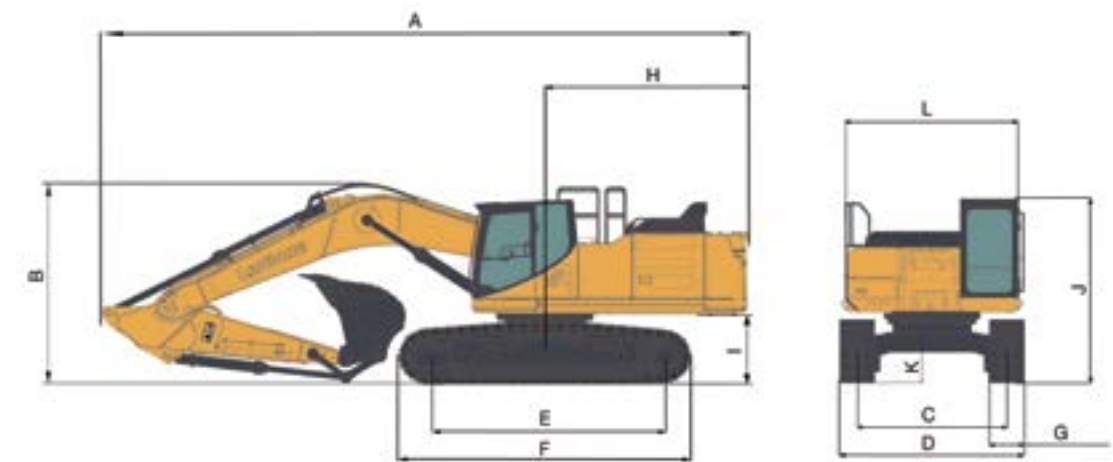
Track shoe each side	936F/936FN/939F/939FN	49
	942F	50
Shoe width, triple grouser		600 mm (1'12")
Bottom rollers each side		9
Top rollers each side		2
Chain track pitch		216 mm (8.5")

SERVICE CAPACITIES

Fuel tank		620 L (163.8 gal)
Engine oil		30 L (7.9 gal)
Final drive (each)		2 × 9.5 L (2 × 2.5 gal)
Swing drive		10.5 L (2.8 gal)
Cooling system		37 L (9.8 gal)
Hydraulic reservoir		240 L (63.4 gal)
Hydraulic system total		450 L (118.88 gal)
DEF tank		65 L (17.17 gal)

SOUND PERFORMANCE

Interior Sound Power Level (ISO 6396)	936F/939F/942F	69 dB(A)
Exterior Sound Power Level (ISO 6395)	936F/939F/942F	105 dB(A)



DIMENSIONS

	936F 936FN	939F 939FN	942F
Boom		6,400 mm (21')	
Arm Options		3,200 mm (10'6") / 2,900 mm (9'6") / 2,600 mm (8'6")	
A Shipping Length		11,300 mm (37'1")	11,597 mm (37'1")
B Shipping Height – Top of Boom		3,800 mm (12'6")	3,800 mm (12'6")
C Track Gauge	936F 939F	2,590 mm (8'6")	936FN 939FN 2,390 (7'10") 2,740 mm (8'6")
D Undercarriage Width– 600mm shoes	936F 939F	3,190 mm (10'6")	936FN 939FN 2,990 (9'10") 3,400 mm (11'1")
E Length to Center of Rollers		4,140 mm (13'7")	4,250 mm (13'11")
F Track Length		5,075 mm (16'8")	5,215 mm (17'1")
G Track Shoe Width		600 mm (24")	600 mm (24")
H Tail Swing Radius		3,593 mm (11'9")	3,766 mm (12'4")
I Counterweight Ground Clearance		1,250 mm (4'1")	1,250 mm (4'1")
J Overall Height of Cab		3,175 mm (10'5")	3,175 mm (10'5")
Overall Height of Cab-with OPG		3,310 mm (10'10")	3,310 mm (10'10")
Overall Height of Cab- with dome lamp		3,310 mm (10'10")	3,310 mm (10'10")
K Min. Ground Clearance		545 mm (1'9")	545 mm (1'9")
L Overall Width of Upper Structure		3,163 mm (10'5") / 2,995 mm (9'9")	3,163 mm (10'5") / 2,995 mm (9'9")

ARM DIMENSIONS

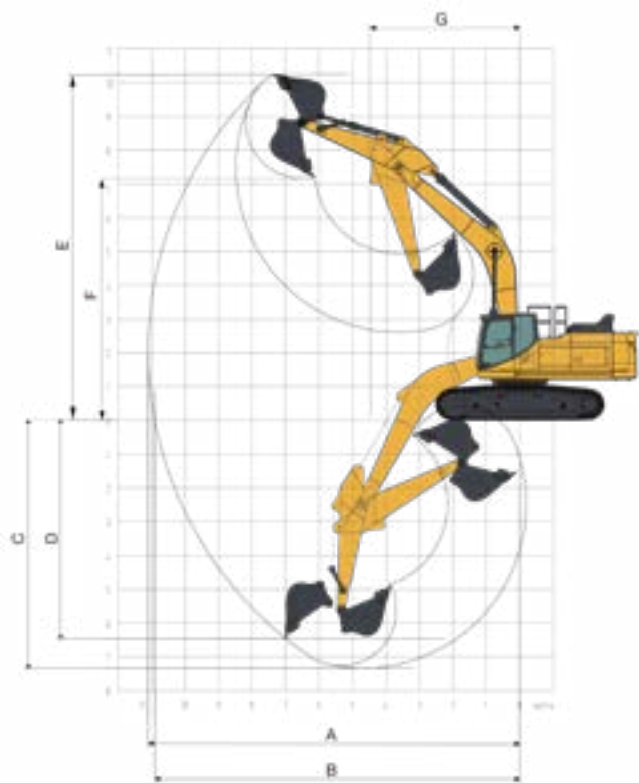
	936F 936FN	939F 939FN	942F
Arm	3,200 mm (10'6")	2,900 mm (9'6")	2,600 mm (8'6")
Length	4,384 mm (14'5")	4,166 mm (13'8")	3,818 mm (12'6")
Height	1,095 mm (3'7")	1,107 mm (3'8")	1,120 mm (3'8")
Width	655 mm (2'2")	655 mm (2'2")	655 mm (2'2")
Weight	2,189.5 kg (4,827 lbs)	2,157 kg (4,755 lbs)	2,046.5 kg (4,512 lbs)

Cylinder, linkage and pin included.

BOOM DIMENSIONS

	936F 936FN	939F 939FN	942F
Boom		6,400 mm (21')	
Length		6,640 mm (21'9")	
Height		1,684 mm (5'6")	
Width		973 mm (3'2")	
Weight		3,535.5 kg (7,794 lbs)	

Cylinder, piping and pin included. Boom cylinder pin excluded.



WORKING RANGE			
Boom Length	6,400 mm (21')		
Arm Length	3,200 mm (10'6")	2,900 mm (9'6")	2,600 mm (8'6")
A. Max. Digging Reach	11,100 mm (36'5")	10,728 mm (35'2")	10,560 mm (34'8")
B. Max. Digging Reach on Ground	10,900 mm (35'9")	10,527 mm (34'6")	10,350 mm (33'11")
C. Max. Digging Depth	7,340 mm (24'1")	6,890 mm (22'7")	6,730 mm (22'1")
D. Max. Vertical Wall Digging Depth	6,460 mm (21'2")	5,085 mm (16'8")	4,430 mm (14'6")
E. Max. Cutting Height	10,240 mm (33'7")	9,818 mm (32'3")	9,830 mm (32'3")
F. Max. Dumping Height	7,160 mm (23'6")	6,655 mm (21'10")	6,900 mm (22'8")
G. Min. Front swing radius	4,465 mm (14'8")	4,385 mm (14'5")	4,700 mm (15'5")
Max. Digging Depth, 2.44 m (8') Level	7,180 mm (23'7")	6,710 mm (22')	6,530 mm (21'5")
Lift above Ground	/		
Depth below Ground	/		
Bucket Digging Force (ISO)	290 kN (65,195 lbf)		
Arm Digging Force (ISO)	196 kN (44,063 lbf)	227 kN (51,032 lbf)	243 kN (54,629 lbf)
Bucket Capacity	936F 936FN 1.8 m ³ (2.4 yd ³) 939F 939FN 2.0 m ³ (2.6 yd ³) 942F 2.1 m ³ (2.7 yd ³)		
Bucket Tip Radius	936F/936FN/939F/939FN 1,785 mm (5'10") 942F 1,839 mm (6'0")		

MACHINE WEIGHTS AND GROUND PRESSURE 936F			
Shoe width	Operating weight	Ground pressure	Overall width
6.4 m (21') boom, 3.2 m (10'6") arm, 1.8 m ³ (2.35 yd ³) bucket, 7,700 kg (16,976 lbs) counterweight			
600 mm (24")	38,800 kg (85,539 lbs)	69.7 kPa (10.1 psi)	3,190 mm (10'5")
700 mm (28")	39,200 kg (86,421 lbs)	60.4 kPa (8.8 psi)	3,190 mm (10'5")
800 mm (32")	39,600 kg (87,303 lbs)	53.4 kPa (7.7 psi)	3,190 mm (10'5")
900 mm (35")	40,000 kg (88,184 lbs)	47.9 kPa (6.9 psi)	3,190 mm (10'5")

MACHINE WEIGHTS AND GROUND PRESSURE 936FN			
Shoe width	Operating weight	Ground pressure	Overall width
6.4 m (21') boom, 3.2 m (10'6") arm, 1.8 m ³ (2.35 yd ³) bucket, 7,700 kg (16,976 lbs) counterweight			
600 mm (24")	38,600 kg (85,098 lbs)	70.5 kPa (10.2 psi)	2, 995 mm (9'10")
700 mm (28")	39,000 kg (85,980 lbs)	61.1 kPa (8.8 psi)	2, 995 mm (9'10")
800 mm (32")	39,400 kg (86,862 lbs)	54 kPa (7.8 psi)	2, 995 mm (9'10")
900 mm (35")	39,800 kg (87,744 lbs)	48.5 kPa (7.0 psi)	2, 995 mm (9'10")

MACHINE WEIGHTS AND GROUND PRESSURE 939F			
Shoe width	Operating weight	Ground pressure	Overall width
6.4 m (21') boom, 3.2 m (10'6") arm, 1.8 m ³ (2.35 yd ³) bucket, 8,500 kg (18,739 lbs) counterweight			
600 mm (24")	39,800 kg (87,744 lbs)	71.5 kPa (10.4 psi)	3,190 mm (10'5")
700 mm (28")	40,200 kg (88,626 lbs)	61.9 kPa (9.0 psi)	3,190 mm (10'5")
800 mm (32")	40,600 kg (89,508 lbs)	54.7 kPa (7.9 psi)	3,190 mm (10'5")
900 mm (35")	41,000 kg (90,390 lbs)	49.1 kPa (7.1 psi)	3,190 mm (10'5")

MACHINE WEIGHTS AND GROUND PRESSURE 939FN			
Shoe width	Operating weight	Ground pressure	Overall width
6.4 m (21') boom, 3.2 m (10'6") arm, 1.8 m ³ (2.35 yd ³) bucket, 8,500 kg (18,739 lbs) counterweight			
600 mm (24")	39,600 kg (87,303 lbs)	72.3 kPa (10.5 psi)	2, 995 mm (9'10")
700 mm (28")	40,000 kg (88,184 lbs)	62.6 kPa (9.1 psi)	2, 995 mm (9'10")
800 mm (32")	40,400 kg (89,066 lbs)	55.3 kPa (8.0 psi)	2, 995 mm (9'10")
900 mm (35")	40,800 kg (89,948 lbs)	49.6 kPa (7.2 psi)	2, 995 mm (9'10")

MACHINE WEIGHTS AND GROUND PRESSURE 942F			
Shoe width	Operating weight	Ground pressure	Overall width
6.4 m (21') boom, 3.2 m (10'6") arm, 2.1 m ³ (2.75 yd ³) bucket, 9,000 kg (19,842 lbs) counterweight			
600 mm (24")	42,800 kg (94,358 lbs)	76.3 kPa (11.1 psi)	3,190 mm (10'5")
700 mm (28")	43,200 kg (95,240 lbs)	66.0 kPa (9.6 psi)	3,190 mm (10'5")
800 mm (32")	43,600 kg (96,122 lbs)	58.3 kPa (8.5 psi)	3,190 mm (10'5")
900 mm (35")	44,000 kg (97,003 lbs)	52.3 kPa (7.6 psi)	3,190 mm (10'5")

BUCKET SELECTION GUIDE 936F/936FN

Bucket type	Capacity	Cutting width	Weight	Teeth pcs	6.4 m (21') Boom		
					3.2 m (10'5") Arm	2.9 m (9'6") Arm	2.6 m (8'6") Arm
Earth type	/	/	/	/	/	/	/
General type	1.8 m ³ (2.35 yd ³)	1,540 mm (5'0")	1,667 kg (3,675 lbs)	5	B	C	D
Rock type	/	/	/	/	/	/	/

The recommendations are given as a guide only, based on typical operation conditions. Bucket capacity based on ISO 7451, heaped material with a 1:1 angle of repose.

Maximum material density:
 A. 1,200-1,300 kg/m³ (2,023-2,191 lb/yd³): Coal, Caliche, Shale
 B. 1,400-1,600 kg/m³ (2,360-2,697 lb/yd³): Wet earth and clay, limestone, sandstone
 C. 1,700-1,800 kg/m³ (2,865-3,034 lb/yd³): Granite, wet sand, well blasted rock
 D. 1,900 kg/m³ (3,203 lb/yd³): Wet mud, Iron ore
 NA. Not applicable

BUCKET SELECTION GUIDE 939F/939FN/942F

Bucket type	Capacity	Cutting width	Weight	Teeth pcs	6.4 m (21') Boom		
					3.2 m (10'5") Arm	2.9 m (9'6") Arm	2.6 m (8'6") Arm
Earth type	/	/	/	/	/	/	/
General type	939F/939FN 2.0 m ³ (2.62 yd ³) 942F 2.1 m ³ (2.75 yd ³)	1,605 mm (5'3")	1,736 kg (3,827 lbs)	5	B	C	D
Rock type	/	/	/	/	/	/	/

The recommendations are given as a guide only, based on typical operation conditions. Bucket capacity based on ISO 7451, heaped material with a 1:1 angle of repose.

Maximum material density:
 A. 1,200-1,300 kg/m³ (2,023-2,191 lb/yd³): Coal, Caliche, Shale
 B. 1,400-1,600 kg/m³ (2,360-2,697 lb/yd³): Wet earth and clay, limestone, sandstone
 C. 1,700-1,800 kg/m³ (2,865-3,034 lb/yd³): Granite, wet sand, well blasted rock
 D. 1,900 kg/m³ (3,203 lb/yd³): Wet mud, Iron ore
 NA. Not applicable

Lifting capacity at the arm end without bucket.
 For lifting capacity including bucket, weight of the bucket or the bucket with quick coupler must be deducted from the lifting capacities.

Lifting capacities are based on the machine standing on a firm, uniform supporting surface.



Rating over-front (Cf)



Rating over-side (Cs)

- Do not attempt to lift or hold any load that is greater than these rated values at their specified load radius and height. Weight of all accessories must be deducted from the above lifting capacities.
- The rated loads are in compliance with ISO 10567 Hydraulic Excavator Lift Capacity Rating Standard. They do not exceed 87% of hydraulic lifting capacity or 75% tipping load.
- Ratings at bucket lift hook.

- Lifting capacities are based on machine standing on level, firm and uniform ground.
- *Indicates the load is limited by hydraulic capacity rather than tipping capacity.
- Operator should be fully acquainted with the Operator's and Maintenance Instructions before operating this machine and rules for the safe operation of equipment should be adhered to at all times.

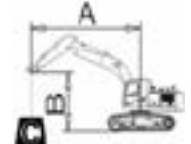
LIFTING CAPACITY

936F with 600 mm (24") Shoes, 6,400 mm (21') Boom, 3,200 mm (10'6") Arm

Conditions

A: Load radius
 B: Load point height
 C: Lifting capacity rating
 Cf: Rating loads over front
 Cs: Rating loads over side or 360°

Boom length: 6,400 mm (21')
 Arm length: 3,200 mm (10'6")
 Shoes: 600 mm (24")
 Bucket: None
 Counterweight: 7,700 kg



B (m/ft)	3 m (10')		4.5m (15')		6 m (20')		7.5 (25')		9 (30')		MAX REACH				
	Cf	Cs	Cf	Cs	Cf	Cs	Cf	Cs	Cf	Cs	Cf	Cs	A (m/ft)		
6.0	kg						*8,170	6,832			*8,052	5,565	8.5		
20'	lb						*18,012	15,061			*17,751	12,269	28.0'		
4.5	kg				*9,921	9,196	*8,711	6,626	*8,103	5,001	*7,770	4,910	9.1		
15'	lb				*21,871	20,273	*19,204	14,608	*17,863	11,025	*17,129	10,824	30.0'		
3.0	kg				*15,350	12,859	*11,374	8,662	*9,449	6,359	8,297	4,891	7,894	4,655	9.3
10'	lb				*33,841	28,349	*25,076	19,095	*20,831	14,019	18,292	10,784	17,403	10,262	31.0
1.5	kg				*17,566	11,989	*12,641	8,197	*10,145	6,106	8,162	4,770	7,668	4,491	9.4
5'	lb				*38,727	26,431	*27,869	18,071	*22,365	13,462	17,995	10,517	16,906	9,901	31.0'
0	kg				*18,247	11,632	*13,353	7,906	10,421	5,927	8,072	4,689	7,836	4,562	9.2
0'	lb				*40,228	25,644	*29,438	17,429	22,975	13,067	17,796	10,338	17,275	10,057	30.0'
-1.5	kg	*15,985	*15,985	*17,779	11,584	*13,353	7,797	10,338	5,855			8,445	4,886	8.7	
-5'	lb	*35,241	*35,241	*39,197	25,538	*29,438	17,190	22,792	12,908			18,619	10,773	29.0'	
-3.0	kg	*22,032	*22,032	*16,332	11,727	*12,505	7,853	*9,673	5,921			*8,909	5,578	7.9	
-10'	lb	*48,573	*48,573	*36,005	25,854	*27,569	17,312	*21,326	13,054			*19,641	12,297	26.0'	
-4.5	kg	*17,734	*17,734	*13,554	12,064	*10,284	8,103					*8,699	7,077	6.7	
-15'	lb	*39,098	*39,098	*29,882	26,596	*22,673	17,864					*19,177	15,602	22.0'	

LIFTING CAPACITY

936F with 700 mm (28") Shoes, 6,400 mm (21') Boom, 3,200 mm (10'6") Arm **Conditions**

A: Load radius
 B: Load point height
 C: Lifting capacity rating
 Cf: Rating loads over front
 Cs: Rating loads over side or 360°

Boom length: 6,400 mm (21')
 Arm length: 3,200 mm (10'6")
 Shoes: 700 mm (28")
 Bucket: None
 Counterweight: 7,700 kg



B (m/ft)	3 m (10')		4.5m (15')		6 m (20')		7.5 (25')		9 (30')		MAX REACH		A (m/ft)
	Cf	Cs	Cf	Cs	Cf	Cs	Cf	Cs	Cf	Cs	Cf	Cs	
6.0	kg						*8,170	6,940			*8,052	5,658	8.5
20'	lb						*18,012	15,299			*17,751	12,473	28.0'
4.5	kg				*9,921	9,338	*8,711	6,734	*8,103	5,088	*7,770	4,995	9.1
15'	lb				*21,871	20,586	*19,204	14,846	*17,863	11,217	*17,129	11,013	30.0'
3.0	kg		*15,350	13,067	*11,374	8,804	*9,449	6,467	*8,377	4,978	8,018	4,739	9.3
10'	lb		*33,841	28,809	*25,076	19,409	*20,831	14,256	*18,467	10,975	17,678	10,447	31.0
1.5	kg		*17,566	12,198	*12,641	8,339	*10,145	6,214	8,292	4,857	7,791	4,573	9.4
5'	lb		*38,727	26,891	*27,869	18,385	*22,365	13,699	18,281	10,708	17,177	10,083	31.0'
0	kg		*18,247	11,841	*13,353	8,048	*10,575	6,035	8,202	4,776	7,962	4,646	9.2
0'	lb		*40,228	26,104	*29,438	17,743	*23,313	13,305	18,083	10,530	17,553	10,243	30.0'
-1.5	kg	*15,985	*15,985	*17,779	11,793	*13,353	7,939	10,504	5,963		8,581	4,977	8.7
-5'	lb	*35,241	*35,241	*39,197	25,999	*29,438	17,503	23,158	13,145		18,919	10,972	29.0'
-3.0	kg	*22,032	*22,032	*16,332	11,936	*12,505	7,995	*9,673	6,029		*8,909	5,679	7.9
-10'	lb	*48,573	*48,573	*36,005	26,314	*27,569	17,626	*21,326	13,291		*19,641	12,520	26.0'
-4.5	kg	*17,734	*17,734	*13,554	12,272	*10,284	8,245				*8,699	7,201	6.7
-15'	lb	*39,098	*39,098	*29,882	27,056	*22,673	18,177				*19,177	15,875	22.0'

LIFTING CAPACITY

936F with 600 mm (24") Shoes, 6,400 mm (21') Boom, 2,900 mm (9'6") Arm **Conditions**

A: Load radius
 B: Load point height
 C: Lifting capacity rating
 Cf: Rating loads over front
 Cs: Rating loads over side or 360°

Boom length: 6,400 mm (21')
 Arm length: 2,900 mm (9'6")
 Shoes: 600 mm (24")
 Bucket: None
 Counterweight: 7,700 kg



B (m/ft)	3 m (10')		4.5m (15')		6 m (20')		7.5 (25')		9 (30')		MAX REACH		A (m/ft)	
	Cf	Cs	Cf	Cs	Cf	Cs	Cf	Cs	Cf	Cs	Cf	Cs		
6.0	kg						*8,501	6,777			*8,407	5,853	8.2	
20'	lb						*18,740	14,940			*18,534	12,904	27.0'	
4.5	kg			*12,911	*12,911	*10,290	9,103	*8,982	6,581		*8,419	5,147	8.8	
15'	lb			*28,464	*28,464	*22,686	20,070	*19,802	14,508		*18,561	11,348	29.0'	
3.0	kg			*15,911	12,609	*11,677	8,568	*9,664	6,319	8,275	4,872	8,137	4,791	9.1
10'	lb			*35,077	27,797	*25,743	18,889	*21,306	13,931	18,243	10,740	17,939	10,563	30.0'
1.5	kg			*17,828	11,811	*12,833	8,121	*10,290	6,077	8,159	4,767	8,032	4,696	9.1
5'	lb			*39,304	26,040	*28,292	17,903	*22,685	13,398	17,987	10,510	17,708	10,354	30.0'
0	kg			*18,167	11,546	*13,403	7,860	10,408	5,916		8,217	4,775	8.9	
0'	lb			*40,052	25,454	*29,548	17,329	22,947	13,042		18,115	10,527	29.0'	
-1.5	kg	*16,449	*16,449	*17,457	11,557	*13,246	7,786	10,355	5,869		8,890	5,132	8.4	
-5'	lb	*36,265	*36,265	*38,487	25,479	*29,203	17,165	22,829	12,940		19,599	11,315	28.0'	
-3.0	kg	*20,689	*20,689	*15,796	11,747	*12,199	7,881				*9,285	5,987	7.5	
-10'	lb	*45,612	*45,612	*34,823	25,898	*26,895	17,374				*20,471	13,199	25.0'	
-4.5	kg	*16,171	*16,171	*12,694	12,145	*9,507	8,206				*8,760	7,740	6.3	
-15'	lb	*35,650	*35,650	*27,984	26,776	*20,960	18,092				*19,313	17,064	21.0'	

LIFTING CAPACITY

936F with 700 mm (28") Shoes, 6,400 mm (21') Boom, 2,900 (9'6") mm Arm **Conditions**

A: Load radius
 B: Load point height
 C: Lifting capacity rating
 Cf: Rating loads over front
 Cs: Rating loads over side or 360°

Boom length: 6,400 mm (21')
 Arm length: 2,900 mm (9'6")
 Shoes: 700 mm (28")
 Bucket: None
 Counterweight: 7,700 kg



B (m/ft)	3 m (10')		4.5m (15')		6 m (20')		7.5 (25')		9 (30')		MAX REACH		A (m/ft)	
	Cf	Cs	Cf	Cs	Cf	Cs	Cf	Cs	Cf	Cs	Cf	Cs		
6.0	kg						*8,501	6,885			*8,407	5,950	8.2	
20'	lb						*18,740	15,178			*18,534	13,118	27.0'	
4.5	kg			*12,911	*12,911	*10,290	9,246	*8,982	6,688		*8,419	5,236	8.8	
15'	lb			*28,464	*28,464	*22,686	20,383	*19,802	14,745		*18,561	11,544	29.0'	
3.0	kg			*15,911	12,817	*11,677	8,710	*9,664	6,427	8,405	4,959	8,265	4,877	9.1
10'	lb			*35,077	28,258	*25,743	19,203	*21,306	14,169	18,530	10,932	18,222	10,752	30.0'
1.5	kg			*17,828	12,020	*12,833	8,263	*10,290	6,185	8,289	4,854	8,160	4,782	9.1
5'	lb			*39,304	26,500	*28,292	18,217	*22,685	13,636	18,274	10,702	17,990	10,543	30.0'
0	kg			*18,167	11,754	*13,403	8,002	10,574	6,024		8,349	4,863	8.9	
0'	lb			*40,052	25,914	*29,548	17,642	23,313	13,280		18,406	10,721	29.0'	
-1.5	kg	*16,449	*16,449	*17,457	11,766	*13,246	7,928	*10,454	5,977		9,032	5,226	8.4	
-5'	lb	*36,265	*36,265	*38,487	25,940	*29,203	17,478	*23,048	13,178		19,913	11,522	28.0'	
-3.0	kg	*20,689	*20,689	*15,796	11,956	*12,199	8,023				*9,285	6,095	7.5	
-10'	lb	*45,612	*45,612	*34,823	26,358	*26,895	17,688				*20,471	13,437	25.0'	
-4.5	kg	*16,171	*16,171	*12,694	12,354	*9,507	8,348				*8,760	7,874	6.3	
-15'	lb	*35,650	*35,650	*27,984	27,236	*20,960	18,405				*19,313	17,359	21.0'	

LIFTING CAPACITY

936F with 600 mm (24") Shoes, 6,400 mm (21') Boom, 2,600 mm (8'6") Arm **Conditions**

A: Load radius
 B: Load point height
 C: Lifting capacity rating
 Cf: Rating loads over front
 Cs: Rating loads over side or 360°

Boom length: 6,400 mm (21')
 Arm length: 2,600 mm (8'6")
 Shoes: 600 mm (24")
 Bucket: None
 Counterweight: 7,700 kg



B (m/ft)	3 m (10')		4.5m (15')		6 m (20')		7.5 (25')		MAX REACH		A (m/ft)		
	Cf	Cs	Cf	Cs	Cf	Cs	Cf	Cs	Cf	Cs			
6.0	kg						*9,545	9,480	*8,842	6,721	*8,789	6,168	7.9
20'	lb						*21,042	20,900	*19,494	14,817	*19,377	13,598	26.0'
4.5	kg			*13,533	*13,533	*10,644	9,013	*9,249	6,539	*8,775	5,404	8.5	
15'	lb			*29,835	*29,835	*23,465	19,871	*20,391	14,416	*19,347	11,915	28.0'	
3.0	kg			*16,443	12,340	*11,956	8,476	*9,869	6,284	8,541	5,020	8.8	
10'	lb			*36,252	27,205	*26,359	18,686	*21,758	13,855	18,830	11,067	29.0'	
1.5	kg			*18,007	11,634	*12,995	8,047	*10,420	6,054	8,427	4,917	8.8	
5'	lb			*39,699	25,649	*28,650	17,740	*22,973	13,347	18,578	10,840	29.0'	
0	kg			*17,988	11,468	*13,419	7,818	10,404	5,912	8,632	5,004	8.6	
0'	lb			*39,656	25,283	*29,585	17,236	22,937	13,034	19,030	11,033	28.0'	
-1.5	kg	*16,810	*16,810	*17,057	11,537	*13,103	7,780	*10,338	5,896	*9,336	5,400	8.1	
-5'	lb	*37,059	*37,059	*37,605	25,434	*28,888	17,153	*22,792	12,999	*20,582	11,905	27.0'	
-3.0	kg	*19,213	*19,213	*15,194	11,775	*11,840	7,920			*9,429	6,354	7.2	
-10'	lb	*42,357	*42,357	*33,497	25,958	*26,104	17,461			*20,787	14,009	24.0'	
-4.5	kg			*11,732	*11,732					*8,979	8,702	5.8	
-15'	lb			*25,865	*25,865					*19,796	19,185	19.0'	



LIFTING CAPACITY

936F with 700 mm (28") Shoes, 6,400 mm (21') Boom, 2,600 mm (8'6") Arm **Conditions**

A: Load radius
 B: Load point height
 C: Lifting capacity rating
 Cf: Rating loads over front
 Cs: Rating loads over side or 360°

Boom length: 6,400 mm (21')
 Arm length: 2,600 mm (8'6")
 Shoes: 700 mm (28")
 Bucket: None
 Counterweight: 7,700 kg



B (m/ft)	3		4.5		6		7.5		MAX REACH		A (m/ft)	
	Cf	Cs	Cf	Cs	Cf	Cs	Cf	Cs	Cf	Cs		
6.0	kg				*9,545	*9,545	*8,842	6,829	*8,789	6,269	7.9	
20'	lb				*21,042	*21,042	*19,494	15,055	*19,377	13,821	26.0'	
4.5	kg		*13,533	*13,533	*10,644	9,156	*9,249	6,647	*8,775	5,497	8.5	
15'	lb		*29,835	*29,835	*23,465	20,185	*20,391	14,654	*19,347	12,119	28.0'	
3.0	kg		*16,443	12,549	*11,956	8,618	*9,869	6,392	8,675	5,109	8.8	
10'	lb		*36,252	27,665	*26,359	18,999	*21,758	14,092	19,126	11,263	29.0'	
1.5	kg		*18,007	11,843	*12,995	8,189	*10,420	6,162	8,561	5,006	8.8	
5'	lb		*39,699	26,109	*28,650	18,054	*22,973	13,585	18,873	11,037	29.0'	
0	kg		*17,988	11,677	*13,419	7,960	10,570	6,020	8,770	5,096	8.6	
0'	lb		*39,656	25,743	*29,585	17,550	23,303	13,272	19,335	11,235	28.0'	
-1.5	kg	*16,810	*16,810	*17,057	11,746	*13,103	7,922	*10,338	6,004	*9,336	5,498	8.1
-5'	lb	*37,059	*37,059	*37,605	25,894	*28,888	17,466	*22,792	13,236	*20,582	12,122	27.0'
-3.0	kg	*19,213	*19,213	*15,194	11,983	*11,840	8,063		*9,429	6,468	7.2	
-10'	lb	*42,357	*42,357	*33,497	26,419	*26,104	17,775		*20,787	14,259	24.0'	
-4.5	kg			*11,732	*11,732				*8,979	8,851	5.8	
-15'	lb			*25,865	*25,865				*19,796	19,512	19.0'	

LIFTING CAPACITY

939F with 600 mm (24") Shoes, 6,400 mm (21') Boom, 3,200 mm (10'6") Arm **Conditions**

A: Load radius
 B: Load point height
 C: Lifting capacity rating
 Cf: Rating loads over front
 Cs: Rating loads over side or 360°

Boom length: 6,400 mm (21')
 Arm length: 3,200 mm (10'6")
 Shoes: 600 mm (24")
 Bucket: None
 Counterweight: 8,500 kg



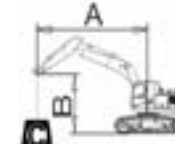
B (m/ft)	3 m (10')		4.5m (15')		6 m (20')		7.5 (25')		9 (30')		MAX REACH		A (m/ft)	
	Cf	Cs	Cf	Cs	Cf	Cs	Cf	Cs	Cf	Cs	Cf	Cs		
6.0	kg						*8,170	7,101			*8,052	5,797	8.5	
20'	lb						*18,012	15,656			*17,751	12,780	28.0'	
4.5	kg					*9,921	9,551	*8,711	6,896	*8,103	5,218	*7,770	5,124	9.1
15'	lb					*21,871	21,057	*19,204	15,202	*17,863	11,504	*17,129	11,296	30.0'
3.0	kg		*15,350	13,381	*11,374	9,017	*9,449	6,628	*8,377	5,109	8,205	4,864	9.3	
10'	lb		*33,841	29,499	*25,076	19,879	*20,831	14,613	*18,467	11,262	18,090	10,723	31.0	
1.5	kg		*17,566	12,511	*12,641	8,552	*10,145	6,376	8,487	4,987	7,976	4,697	9.4	
5'	lb		*38,727	27,582	*27,869	18,855	*22,365	14,056	18,711	10,995	17,583	10,356	31.0'	
0	kg		*18,247	12,154	*13,353	8,261	*10,575	6,197	8,397	4,906	8,152	4,773	9.2	
0'	lb		*40,228	26,794	*29,438	18,213	*23,313	13,661	18,513	10,817	17,972	10,523	30.0'	
-1.5	kg	*15,985	*15,985	*17,779	12,106	*13,353	8,153	*10,532	6,124		*8,768	5,112	8.7	
-5'	lb	*35,241	*35,241	*39,197	26,689	*29,438	17,974	*23,220	13,502		*19,331	11,271	29.0'	
-3.0	kg	*22,032	*22,032	*16,332	12,249	*12,505	8,208	*9,673	6,191		*8,909	5,831	7.9	
-10'	lb	*48,573	*48,573	*36,005	27,004	*27,569	18,096	*21,326	13,648		*19,641	12,855	26.0'	
-4.5	kg	*17,734	*17,734	*13,554	12,586	*10,284	8,458				*8,699	7,386	6.7	
-15'	lb	*39,098	*39,098	*29,882	27,746	*22,673	18,647				*19,177	16,284	22.0'	

LIFTING CAPACITY

939F with 700 mm (28") Shoes, 6,400 mm (21') Boom, 3,200 mm (10'6") Arm **Conditions**

A: Load radius
 B: Load point height
 C: Lifting capacity rating
 Cf: Rating loads over front
 Cs: Rating loads over side or 360°

Boom length: 6,400 mm (21')
 Arm length: 3,200 mm (10'6")
 Shoes: 700 mm (28")
 Bucket: None
 Counterweight: 8,500 kg



B (m/ft)	3 m (10')		4.5m (15')		6 m (20')		7.5 (25')		9 (30')		MAX REACH		A (m)	
	Cf	Cs	Cf	Cs	Cf	Cs	Cf	Cs	Cf	Cs	Cf	Cs		
6.0	kg						*8,170	7,209			*8,052	5,890	8.5	
20'	lb						*18,012	15,893			*17,751	12,985	28.0'	
4.5	kg					*9,921	9,693	*8,711	7,004	*8,103	5,305	*7,770	5,210	9.1
15'	lb					*21,871	21,370	*19,204	15,440	*17,863	11,695	*17,129	11,485	30.0'
3.0	kg		*15,350	13,589	*11,374	9,159	*9,449	6,736	*8,377	5,195	*8,231	4,947	9.3	
10'	lb		*33,841	29,959	*25,076	20,193	*20,831	14,851	*18,467	11,454	*18,146	10,907	31.0	
1.5	kg		*17,566	12,720	*12,641	8,695	*10,145	6,483	8,617	5,074	8,099	4,780	9.4	
5'	lb		*38,727	28,042	*27,869	19,168	*22,365	14,294	18,998	11,187	17,855	10,538	31.0'	
0	kg		*18,247	12,362	*13,353	8,403	*10,575	6,304	8,528	4,993	8,278	4,858	9.2	
0'	lb		*40,228	27,255	*29,438	18,526	*23,313	13,899	18,800	11,008	18,250	10,710	30.0'	
-1.5	kg	*15,985	*15,985	*17,779	12,315	*13,353	8,295	*10,532	6,232		*8,768	5,203	8.7	
-5'	lb	*35,241	*35,241	*39,197	27,149	*29,438	18,287	*23,220	13,739		*19,331	11,470	29.0'	
-3.0	kg	*22,032	*22,032	*16,332	12,458	*12,505	8,350	*9,673	6,298		*8,909	5,932	7.9	
-10'	lb	*48,573	*48,573	*36,005	27,465	*27,569	18,410	*21,326	13,886		*19,641	13,079	26.0'	
-4.5	kg	*17,734	*17,734	*13,554	12,794	*10,284	8,600				*8,699	7,510	6.7	
-15'	lb	*39,098	*39,098	*29,882	28,207	*22,673	18,961				*19,177	16,557	22.0'	

LIFTING CAPACITY

939F with 600 mm (24") Shoes, 6,400 mm (21') Boom, 2,900 mm (9'6") Arm **Conditions**

A: Load radius
 B: Load point height
 C: Lifting capacity rating
 Cf: Rating loads over front
 Cs: Rating loads over side or 360°

Boom length: 6,400 mm (21')
 Arm length: 2,900 mm (9'6")
 Shoes: 600 mm (24")
 Bucket: None
 Counterweight: 8,500 kg



B (m/ft)	3 m (10')		4.5m (15')		6 m (20')		7.5 (25')		9 (30')		MAX REACH		A (m/ft)	
	Cf	Cs	Cf	Cs	Cf	Cs	Cf	Cs	Cf	Cs	Cf	Cs		
6.0	kg						*8,501	7,046			*8,407	6,096	8.2	
20'	lb						*18,740	15,535			*18,534	13,438	27.0'	
4.5	kg					*12,911	*12,911	*10,290	9,459	*8,982	6,850	*8,419	5,370	8.8
15'	lb					*28,464	*28,464	*22,686	20,853	*19,802	15,102	*18,561	11,839	29.0'
3.0	kg		*15,911	13,131	*11,677	8,923	*9,664	6,589	*8,565	5,089	8,458	5,005	9.1	
10'	lb		*35,077	28,948	*25,743	19,673	*21,306	14,525	*18,883	11,219	18,646	11,035	30.0'	
1.5	kg		*17,828	12,333	*12,833	8,476	*10,290	6,347	8,484	4,984	8,353	4,911	9.1	
5'	lb		*39,304	27,190	*28,292	18,687	*22,685	13,992	18,704	10,989	18,414	10,826	30.0'	
0	kg		*18,167	12,068	*13,403	8,216	*10,628	6,185			8,547	4,995	8.9	
0'	lb		*40,052	26,604	*29,548	18,112	*23,430	13,637			18,843	11,011	29.0'	
-1.5	kg	*16,449	*16,449	*17,457	12,079	*13,246	8,141	*10,454	6,139		*9,050	5,368	8.4	
-5'	lb	*36,265	*36,265	*38,487	26,630	*29,203	17,948	*23,048	13,534		*19,951	11,834	28.0'	
-3.0	kg	*20,689	*20,689	*15,796	12,269	*12,199	8,236				*9,285	6,257	7.5	
-10'	lb	*45,612	*45,612	*34,823	27,049	*26,895	18,158				*20,471	13,794	25.0'	
-4.5	kg	*16,171	*16,171	*12,694	12,667	*9,507	8,562				*8,760	8,074	6.3	
-15'	lb	*35,650	*35,650	*27,984	27,926	*20,960	18,875				*19,313	17,801	21.0'	

LIFTING CAPACITY

939F with 700 mm (28") Shoes, 6,400 mm (21') Boom, 2,900 mm (9'6") Arm

Conditions

A: Load radius
B: Load point height
C: Lifting capacity rating
Cf: Rating loads over front
Cs: Rating loads over side or 360°

Boom length: 6,400 mm (21')
Arm length: 2,900 mm (9'6")
Shoes: 700 mm (28")
Bucket: None
Counterweight: 8,500 kg



B (m/ft)	3 m (10')		4.5m (15')		6 m (20')		7.5 (25')		9 (30')		MAX REACH		A (m/ft)	
	Cf	Cs	Cf	Cs	Cf	Cs	Cf	Cs	Cf	Cs	Cf	Cs		
6.0	kg						*8,501	7,154			*8,407	6,192	8.2	
20'	lb						*18,740	15,772			*18,534	13,652	27.0'	
4.5	kg			*12,911	*12,911	*10,290	9,601	*8,982	6,958			*8,419	5,459	8.8
15'	lb			*28,464	*28,464	*22,686	21,167	*19,802	15,339			*18,561	12,036	29.0'
3.0	kg			*15,911	13,339	*11,677	9,066	*9,664	6,696	*8,565	5,176	*8,515	5,091	9.1
10'	lb			*35,077	29,408	*25,743	19,986	*21,306	14,763	*18,883	11,410	*18,773	11,224	30.0'
1.5	kg			*17,828	12,542	*12,833	8,618	*10,290	6,455	8,614	5,071	8,481	4,996	9.1
5'	lb			*39,304	27,650	*28,292	19,000	*22,685	14,230	18,991	11,180	18,697	11,015	30.0'
0	kg			*18,167	12,276	*13,403	8,358	*10,628	6,293			8,679	5,083	8.9
0'	lb			*40,052	27,065	*29,548	18,426	*23,430	13,874			19,134	11,205	29.0'
-1.5	kg	*16,449	*16,449	*17,457	12,288	*13,246	8,283	*10,454	6,247			*9,050	5,462	8.4
-5'	lb	*36,265	*36,265	*38,487	27,090	*29,203	18,262	*23,048	13,772			*19,951	12,041	28.0'
-3.0	kg	*20,689	*20,689	*15,796	12,478	*12,199	8,378					*9,285	6,365	7.5
-10'	lb	*45,612	*45,612	*34,823	27,509	*26,895	18,471					*20,471	14,031	25.0'
-4.5	kg	*16,171	*16,171	*12,694	*12,694	*9,507	8,704					*8,760	8,208	6.3
-15'	lb	*35,650	*35,650	*27,984	*27,984	*20,960	19,189					*19,313	18,095	21.0'

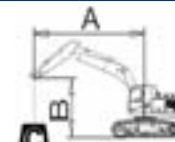
LIFTING CAPACITY

939F with 600 mm (24") Shoes, 6,400 mm (21') Boom, 2,600 mm (8'6") Arm

Conditions

A: Load radius
B: Load point height
C: Lifting capacity rating
Cf: Rating loads over front
Cs: Rating loads over side or 360°

Boom length: 6,400 mm (21')
Arm length: 2,600 mm (8'6")
Shoes: 600 mm (24")
Bucket: None
Counterweight: 8,500 kg



B (m/ft)	3 m (10')		4.5m (15')		6 m (20')		7.5 (25')		MAX REACH		A (m/ft)	
	Cf	Cs	Cf	Cs	Cf	Cs	Cf	Cs	Cf	Cs		
6.0	kg				*9,545	*9,545	*8,842	6,991	*8,789	6,421	7.9	
20'	lb				*21,042	*21,042	*19,494	15,412	*19,377	14,156	26.0'	
4.5	kg			*13,533	*13,533	*10,644	9,369	*9,249	6,809	*8,775	5,637	8.5
15'	lb			*29,835	*29,835	*23,465	20,655	*20,391	15,010	*19,347	12,427	28.0'
3.0	kg			*16,443	12,862	*11,956	8,831	*9,869	6,554	*8,865	5,243	8.8
10'	lb			*36,252	28,356	*26,359	19,469	*21,758	14,449	*19,545	11,558	29.0'
1.5	kg			*18,007	12,156	*12,995	8,402	*10,420	6,324	8,762	5,140	8.8
5'	lb			*39,699	26,800	*28,650	18,524	*22,973	13,941	19,316	11,332	29.0'
0	kg			*17,988	11,990	*13,419	8,174	*10,661	6,182	8,977	5,233	8.6
0'	lb			*39,656	26,433	*29,585	18,020	*23,504	13,628	19,791	11,538	28.0'
-1.5	kg	*16,810	*16,810	*17,057	12,059	*13,103	8,136	*10,338	6,166	*9,336	5,646	8.1
-5'	lb	*37,059	*37,059	*37,605	26,585	*28,888	17,936	*22,792	13,593	*20,582	12,447	27.0'
-3.0	kg	*19,213	*19,213	*15,194	12,296	*11,840	8,276			*9,429	6,638	7.2
-10'	lb	*42,357	*42,357	*33,497	27,109	*26,104	18,245			*20,787	14,634	24.0'
-4.5	kg			*11,732	*11,732					*8,979	*8,979	5.8
-15'	lb			*25,865	*25,865					*19,796	*19,796	19.0'

LIFTING CAPACITY

939F with 700 mm (28") Shoes, 6,400 mm (21') Boom, 2,600 mm (8'6") Arm

Conditions

A: Load radius
B: Load point height
C: Lifting capacity rating
Cf: Rating loads over front
Cs: Rating loads over side or 360°

Boom length: 6,400 mm (21')
Arm length: 2,600 mm (8'6")
Shoes: 700 mm (28")
Bucket: None
Counterweight: 8,500 kg



B (m/ft)	3 m (10')		4.5m (15')		6 m (20')		7.5 (25')		MAX REACH		A (m/ft)	
	Cf	Cs	Cf	Cs	Cf	Cs	Cf	Cs	Cf	Cs		
6.0	kg				*9,545	*9,545	*8,842	7,098	*8,789	6,522	7.9	
20'	lb				*21,042	*21,042	*19,494	15,649	*19,377	14,380	26.0'	
4.5	kg			*13,533	*13,533	*10,644	9,511	*9,249	6,916	*8,775	5,729	8.5
15'	lb			*29,835	*29,835	*23,465	20,968	*20,391	15,248	*19,347	12,631	28.0'
3.0	kg			*16,443	13,071	*11,956	8,973	*9,869	6,662	*8,865	5,332	8.8
10'	lb			*36,252	28,816	*26,359	19,783	*21,758	14,687	*19,545	11,755	29.0'
1.5	kg			*18,007	12,365	*12,995	8,544	*10,420	6,432	8,895	5,229	8.8
5'	lb			*39,699	27,260	*28,650	18,837	*22,973	14,179	19,611	11,528	29.0'
0	kg			*17,988	12,199	*13,419	8,316	*10,661	6,289	9,115	5,325	8.6
0'	lb			*39,656	26,894	*29,585	18,334	*23,504	13,866	20,095	11,740	28.0'
-1.5	kg	*16,810	*16,810	*17,057	12,267	*13,103	8,278	*10,338	6,273	*9,336	5,744	8.1
-5'	lb	*37,059	*37,059	*37,605	27,045	*28,888	18,250	*22,792	13,831	*20,582	12,664	27.0'
-3.0	kg	*19,213	*19,213	*15,194	12,505	*11,840	8,418			*9,429	6,751	7.2
-10'	lb	*42,357	*42,357	*33,497	27,569	*26,104	18,559			*20,787	14,883	24.0'
-4.5	kg			*11,732	*11,732					*8,979	*8,979	5.8
-15'	lb			*25,865	*25,865					*19,796	*19,796	19.0'

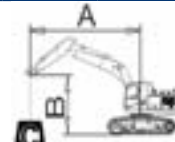
LIFTING CAPACITY

942F with 600 mm (24") Shoes, 6,400 mm (21') Boom, 3,200 mm (10'6") Arm

Conditions

A: Load radius
B: Load point height
C: Lifting capacity rating
Cf: Rating loads over front
Cs: Rating loads over side or 360°

Boom length: 6,400 mm (21')
Arm length: 3,200 mm (10'6")
Shoes: 600 mm (24")
Bucket: None
Counterweight: 9,000 kg



B (m/ft)	3 m (10')		4.5m (15')		6 m (20')		7.5 (25')		9 (30')		MAX REACH		A (m/ft)				
	Cf	Cs	Cf	Cs	Cf	Cs	Cf	Cs	Cf	Cs	Cf	Cs					
6.0	kg						*11,219	8,837			*8,209	7,276	8.5				
20'	lb						*24,733	19,483			*18,099	16,041	28.0'				
4.5	kg						*13,587	11,889	*11,992	8,629	*8,852	6,594	*7,770	6,481	9.1		
15'	lb						*29,955	26,212	*26,438	19,024	*19,514	14,538	*17,129	14,289	30.0'		
3.0	kg						*21,079	16,931	*15,653	11,347	*13,043	8,359	10,126	6,484	*9,031	6,185	9.3
10'	lb						*46,471	37,327	*34,508	25,015	*28,756	18,428	22,325	14,294	*19,910	13,635	31.0
1.5	kg						*24,220	16,041	*17,451	10,874	12,989	8,103	9,990	6,361	*8,696	6,000	9.4
5'	lb						*53,395	35,363	*38,473	23,974	28,637	17,864	22,025	14,024	*19,172	13,228	31.0'
0	kg						*25,207	15,675	17,839	10,579	12,783	7,922	9,900	6,280	*9,312	6,110	9.2
0'	lb						*55,572	34,557	39,328	23,322	28,181	17,464	21,825	13,844	*20,529	13,470	30.0'
-1.5	kg	*15,985	*15,985	*24,606	15,626	17,707	10,468	12,699	7,848						10,359	6,544	8.7
-5'	lb	*35,241	*35,241	*54,248	34,449	39,038	23,079	27,997	17,303						22,839	14,427	29.0'
-3.0	kg	*25,094	*25,094	*22,671	15,772	*17,373	10,525	12,776	7,916						11,908	7,446	7.9
-10'	lb	*55,322	*55,322	*49,981	34,772	*38,300	23,203	28,166	17,451						26,254	16,416	26.0'
-4.5	kg	*24,883	*24,883	*18,942	16,117	*14,390	10,779								*12,209	9,387	6.7
-15'	lb	*54,857	*54,857	*41,761	35,532	*31,725	23,763								*26,915	20,695	22.0'

LIFTING CAPACITY

942F with 700 mm (28") Shoes, 6,400 mm (21') Boom, 3,200 mm (10'6") Arm

Conditions

A: Load radius
B: Load point height
C: Lifting capacity rating
Cf: Rating loads over front
Cs: Rating loads over side or 360°

Boom length: 6,400 mm (21')
Arm length: 3,200 mm (10'6")
Shoes: 700 mm (28")
Bucket: None
Counterweight: 9,000 kg



B (m/ft)	3 m (10')		4.5m (15')		6 m (20')		7.5 (25')		9 (30')		MAX REACH		A (m/ft)
	Cf	Cs	Cf	Cs	Cf	Cs	Cf	Cs	Cf	Cs	Cf	Cs	
6.0	kg						*11,219	8,966			*8,209	7,386	8.5
20'	lb						*24,733	19,766			*18,099	16,284	28.0'
4.5	kg				*13,587	12,059	*11,992	8,758	*8,852	6,698	*7,770	6,583	9.1
15'	lb				*29,955	26,587	*26,438	19,308	*19,514	14,766	*17,129	14,514	30.0'
3.0	kg		*21,079	17,183	*15,653	11,517	*13,043	8,487	10,274	6,587	*9,031	6,284	9.3
10'	lb		*46,471	37,881	*34,508	25,390	*28,756	18,711	22,650	14,522	*19,910	13,854	31.0
1.5	kg		*24,220	16,292	*17,451	11,045	13,178	8,231	10,138	6,465	*8,696	6,098	9.4
5'	lb		*53,395	35,918	*38,473	24,349	29,053	18,147	22,350	14,252	*19,172	13,444	31.0'
0	kg		*25,207	15,926	18,101	10,749	12,971	8,050	10,047	6,383	*9,312	6,211	9.2
0'	lb		*55,572	35,112	39,905	23,697	28,597	17,747	22,150	14,072	*20,529	13,692	30.0'
-1.5	kg	*15,985	*15,985	*24,606	15,877	17,969	10,638	12,888	7,977		10,514	6,651	8.7
-5'	lb	*35,241	*35,241	*54,248	35,004	39,615	23,454	28,413	17,586		23,179	14,664	29.0'
-3.0	kg	*25,094	*25,094	*22,671	16,024	*17,373	10,695	12,964	8,044		12,084	7,567	7.9
-10'	lb	*55,322	*55,322	*49,981	35,327	*38,300	23,578	28,582	17,734		26,641	16,682	26.0'
-4.5	kg	*24,883	*24,883	*18,942	16,369	*14,390	10,949				*12,209	9,535	6.7
-15'	lb	*54,857	*54,857	*41,761	36,087	*31,725	24,138				*26,915	21,021	22.0'

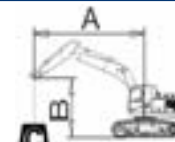
LIFTING CAPACITY

942F with 600 mm (24") Shoes, 6,400 mm (21') Boom, 2,900 mm (9'6") Arm

Conditions

A: Load radius
B: Load point height
C: Lifting capacity rating
Cf: Rating loads over front
Cs: Rating loads over side or 360°

Boom length: 6,400 mm (21')
Arm length: 2,900 mm (9'6")
Shoes: 600 mm (24")
Bucket: None
Counterweight: 9,000 kg



B (m/ft)	3 m (10')		4.5m (15')		6 m (20')		7.5 (25')		9 (30')		MAX REACH		A (m/ft)	
	Cf	Cs	Cf	Cs	Cf	Cs	Cf	Cs	Cf	Cs	Cf	Cs		
6.0	kg						*11,667	8,782			*9,160	7,643	8.2	
20'	lb						*25,722	19,361			*20,195	16,849	27.0'	
4.5	kg			*17,614	*17,614	*14,098	11,796	*12,360	8,583		*8,901	6,785	8.8	
15'	lb			*38,832	*38,832	*31,082	26,005	*27,250	18,922		*19,623	14,958	29.0'	
3.0	kg			*21,883	16,675	*16,077	11,251	13,235	8,318	10,104	6,464	*9,047	6,362	9.1
10'	lb			*48,243	36,762	*35,443	24,805	29,179	18,339	22,276	14,250	*19,945	14,026	30.0'
1.5	kg			*23,165	15,859	*17,725	10,797	12,956	8,074	9,987	6,358	9,833	6,266	9.1
5'	lb			*51,070	34,962	*39,077	23,803	28,563	17,799	22,018	14,018	21,678	13,815	30.0'
0	kg			*24,900	15,587	17,784	10,532	12,770	7,910			10,073	6,387	8.9
0'	lb			*54,896	34,363	39,206	23,220	28,153	17,439			22,206	14,081	29.0'
-1.5	kg	*16,449	*16,449	*24,193	15,598	17,693	10,457	12,716	7,863			10,899	6,863	8.4
-5'	lb	*36,265	*36,265	*53,337	34,389	39,007	23,053	28,034	17,336			24,029	15,130	28.0'
-3.0	kg	*27,105	*27,105	*21,965	15,793	*16,964	10,553					12,852	7,982	7.5
-10'	lb	*59,756	*59,756	*48,424	34,818	*37,398	23,266					28,334	17,598	25.0'
-4.5	kg	*22,810	*22,810	*17,795	16,201	*13,341	10,884					*12,313	10,248	6.3
-15'	lb	*50,286	*50,286	*39,230	35,716	*29,413	23,995					*27,145	22,592	21.0'

LIFTING CAPACITY

942F with 700 mm (28") Shoes, 6,400 mm (21') Boom, 2,900 mm (9'6") Arm

Conditions

A: Load radius
B: Load point height
C: Lifting capacity rating
Cf: Rating loads over front
Cs: Rating loads over side or 360°

Boom length: 6,400 mm (21')
Arm length: 2,900 mm (9'6")
Shoes: 700 mm (28")
Bucket: None
Counterweight: 9,000 kg



B (m/ft)	3 m (10')		4.5m (15')		6 m (20')		7.5 (25')		9 (30')		MAX REACH		A (m/ft)	
	Cf	Cs	Cf	Cs	Cf	Cs	Cf	Cs	Cf	Cs	Cf	Cs		
6.0	kg						*11,667	8,910			*9,160	7,758	8.2	
20'	lb						*25,722	19,644			*20,195	17,103	27.0'	
4.5	kg			*17,614	*17,614	*14,098	11,966	*12,360	8,712		*8,901	6,891	8.8	
15'	lb			*38,832	*38,832	*31,082	26,380	*27,250	19,206		*19,623	15,192	29.0'	
3.0	kg			*21,883	16,927	*16,077	11,422	*13,337	8,447	10,252	6,567	*9,047	6,464	9.1
10'	lb			*48,243	37,317	*35,443	25,180	*29,403	18,622	22,601	14,478	*19,945	14,250	30.0'
1.5	kg			*23,165	16,110	*17,725	10,967	13,145	8,202	10,135	6,462	9,978	6,368	9.1
5'	lb			*51,070	35,517	*39,077	24,178	28,979	18,083	22,343	14,245	21,999	14,039	30.0'
0	kg			*24,900	15,838	18,045	10,702	12,958	8,039			10,222	6,492	8.9
0'	lb			*54,896	34,917	39,783	23,594	28,569	17,723			22,536	14,312	29.0'
-1.5	kg	*16,449	*16,449	*24,193	15,850	17,955	10,627	12,905	7,992			11,061	6,975	8.4
-5'	lb	*36,265	*36,265	*53,337	34,943	39,584	23,428	28,450	17,619			24,385	15,377	28.0'
-3.0	kg	*27,105	*27,105	*21,965	16,045	*16,964	10,723					12,943	8,111	7.5
-10'	lb	*59,756	*59,756	*48,424	35,372	*37,398	23,641					28,534	17,881	25.0'
-4.5	kg	*22,810	*22,810	*17,795	16,452	*13,341	11,054					*12,313	10,407	6.3
-15'	lb	*50,286	*50,286	*39,230	36,271	*29,413	24,370					*27,145	22,944	21.0'

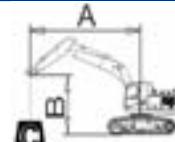
LIFTING CAPACITY

942F with 600 mm (24") Shoes, 6,400 mm (21') Boom, 2,600 mm (8'6") Arm

Conditions

A: Load radius
B: Load point height
C: Lifting capacity rating
Cf: Rating loads over front
Cs: Rating loads over side or 360°

Boom length: 6,400 mm (21')
Arm length: 2,600 mm (8'6")
Shoes: 600 mm (24")
Bucket: None
Counterweight: 9,000 kg



B (m/ft)	3 m (10')		4.5m (15')		6 m (20')		7.5 (25')		MAX REACH		A (m/ft)			
	Cf	Cs	Cf	Cs	Cf	Cs	Cf	Cs	Cf	Cs				
6.0	kg						*13,005	12,178	*12,131	8,725	*10,319	8,043	7.9	
20'	lb						*28,672	26,849	*26,745	19,236	*22,748	17,732	26.0'	
4.5	kg			*18,495	17,685	*14,587	11,704	*12,722	8,541	*10,334	7,114	6,785	8.5	
15'	lb			*40,774	38,989	*32,160	25,803	*28,048	18,830	*22,783	15,683	14,958	28.0'	
3.0	kg			*22,656	16,400	*16,470	11,158	13,195	8,283	10,427	6,656	6,362	8.8	
10'	lb			*49,947	36,156	*36,310	24,599	29,090	18,262	22,989	14,675	14,026	29.0'	
1.5	kg			*19,538	15,677	*17,960	10,722	12,929	8,050	10,312	6,552	6,266	8.8	
5'	lb			*43,075	34,563	*39,594	23,638	28,504	17,748	22,734	14,446	13,815	29.0'	
0	kg			*24,065	15,507	17,733	10,490	12,765	7,906	10,577	6,686	6,387	8.6	
0'	lb			*53,055	34,188	39,094	23,126	28,143	17,431	23,319	14,740	14,081	28.0'	
-1.5	kg	*16,810	*16,810	*23,677	15,577	17,687	10,451	12,747	7,890	11,494	7,211	6,863	8.1	
-5'	lb	*37,059	*37,059	*52,198	34,342	38,992	23,041	28,102	17,395	25,340	15,897	14,958	27.0'	
-3.0	kg	*26,925	*26,925	*21,171	15,821	*16,482	10,593					13,143	8,457	7.2
-10'	lb	*59,360	*59,360	*46,674	34,879	*36,337	23,354					28,976	18,645	24.0'
-4.5	kg			*16,509	16,304							*12,643	11,509	5.8
-15'	lb			*36,396	35,944							*27,872	25,373	19.0'

LIFTING CAPACITY

942F with 700 mm (28") Shoes, 6,400 mm (21') Boom, 2,600 mm (8'6") Arm

Conditions

A: Load radius
B: Load point height
C: Lifting capacity rating
Cf: Rating loads over front
Cs: Rating loads over side or 360°

Boom length: 6,400 mm (21')
Arm length: 2,600 mm (8'6")
Shoes: 700 mm (28")
Bucket: None
Counterweight: 9,000 kg



B (m/ft)	3 m (10')		4.5m (15')		6 m (20')		7.5 (25')		MAX REACH		A (m/ft)	
	Cf	Cs	Cf	Cs	Cf	Cs	Cf	Cs	Cf	Cs		
6.0	kg				*13,005	12,349	*12,131	8,854	*10,319	8,164	7.9	
20'	lb				*28,672	27,224	*26,745	19,519	*22,748	17,998	26.0'	
4.5	kg		*18,495	17,937	*14,587	11,874	*12,722	8,669	*10,334	7,224	8.5	
15'	lb		*40,774	39,544	*32,160	26,178	*28,048	19,113	*22,783	15,927	28.0'	
3.0	kg		*22,656	16,652	*16,470	11,328	13,384	8,412	10,579	6,762	8.8	
10'	lb		*49,947	36,710	*36,310	24,974	29,506	18,545	23,323	14,908	29.0'	
1.5	kg		*19,538	15,929	*17,960	10,892	13,118	8,179	10,464	6,658	8.8	
5'	lb		*43,075	35,117	*39,594	24,013	28,920	18,031	23,069	14,679	29.0'	
0	kg		*24,065	15,759	17,994	10,660	12,954	8,035	10,734	6,795	8.6	
0'	lb		*53,055	34,742	39,671	23,501	28,559	17,714	23,664	14,980	28.0'	
-1.5	kg	*16,810	*16,810	*23,677	15,829	17,948	10,621	12,936	8,019	11,664	7,328	8.1
-5'	lb	*37,059	*37,059	*52,198	34,897	39,569	23,416	28,518	17,678	25,714	16,155	27.0'
-3.0	kg	*26,925	*26,925	*21,171	16,073	*16,482	10,763			*13,143	8,592	7.2
-10'	lb	*59,360	*59,360	*46,674	35,434	*36,337	23,729			*28,976	18,943	24.0'
-4.5	kg			*16,509	*16,509					*12,643	11,687	5.8
-15'	lb			*36,396	*36,396					*27,872	25,765	19.0'

LIFTING CAPACITY

936FN with 600 mm (24") Shoes, 6,400 mm (21') Boom, 3,200 mm (10'6") Arm

Conditions

A: Load radius
B: Load point height
C: Lifting capacity rating
Cf: Rating loads over front
Cs: Rating loads over side or 360°

Boom length: 6,400 mm (21')
Arm length: 3,200 mm (10'6")
Shoes: 600 mm (24")
Bucket: None
Counterweight: 7,700 kg



B (m/ft)	3 m (10')		4.5m (15')		6 m (20')		7.5 (25')		9 (30')		MAX REACH		A (m/ft)
	Cf	Cs	Cf	Cs	Cf	Cs	Cf	Cs	Cf	Cs	Cf	Cs	
6.0	kg						*8,170	6,267			*8,052	5,095	8.5
20'	lb						*18,012	13,817			*17,751	11,233	28.0'
4.5	kg				*9,921	8,406	*8,711	6,065	*8,103	4,569	*7,770	4,484	9.1
15'	lb				*21,871	18,532	*19,204	13,371	*17,863	10,072	*17,129	9,885	30.0'
3.0	kg		*15,350	11,600	*11,374	7,883	*9,449	5,802	8,232	4,460	7,831	4,243	9.3
10'	lb		*33,841	25,573	*25,076	17,379	*20,831	12,791	18,148	9,833	17,265	9,354	31.0
1.5	kg		*17,566	10,756	*12,641	7,428	*10,145	5,553	8,097	4,341	7,607	4,086	9.4
5'	lb		*38,727	23,713	*27,869	16,376	*22,365	12,243	17,851	9,570	16,770	9,008	31.0'
0	kg		*18,247	10,410	*13,353	7,143	10,338	5,377	8,007	4,261	7,772	4,145	9.2
0'	lb		*40,228	22,950	*29,438	15,747	22,792	11,854	17,653	9,394	17,135	9,139	30.0'
-1.5	kg	*15,985	*15,985	*17,779	10,363	*13,353	7,037	10,255	5,306		8,377	4,438	8.7
-5'	lb	*35,241	*35,241	*39,197	22,848	*29,438	15,513	22,609	11,697		18,469	9,785	29.0'
-3.0	kg	*22,032	19,939	*16,332	10,502	*12,505	7,091	*9,673	5,371		*8,909	5,066	7.9
-10'	lb	*48,573	43,959	*36,005	23,154	*27,569	15,633	*21,326	11,841		*19,641	11,168	26.0'
-4.5	kg	*17,734	*17,734	*13,554	10,829	*10,284	7,336				*8,699	6,426	6.7
-15'	lb	*39,098	*39,098	*29,882	23,873	*22,673	16,173				*19,177	14,167	22.0'

LIFTING CAPACITY

936FN with 700 mm (28") Shoes, 6,400 mm (21') Boom, 3,200 mm (10'6") Arm

Conditions

A: Load radius
B: Load point height
C: Lifting capacity rating
Cf: Rating loads over front
Cs: Rating loads over side or 360°

Boom length: 6,400 mm (21')
Arm length: 3,200 mm (10'6")
Shoes: 700 mm (28")
Bucket: None
Counterweight: 7,700 kg



B (m/ft)	3 m (10')		4.5m (15')		6 m (20')		7.5 (25')		9 (30')		MAX REACH		A (m/ft)	
	Cf	Cs	Cf	Cs	Cf	Cs	Cf	Cs	Cf	Cs	Cf	Cs		
6.0	kg						*8,170	6,369			*8,052	5,183	8.5	
20'	lb						*18,012	14,041			*17,751	11,426	28.0'	
4.5	kg					*9,921	8,539	*8,711	6,166	*8,103	4,650	*7,770	4,565	9.1
15'	lb					*21,871	18,825	*19,204	13,595	*17,863	10,252	*17,129	10,063	30.0'
3.0	kg		*15,350	11,793	*11,374	8,016	*9,449	5,903	8,362	4,542	7,956	4,322	9.3	
10'	lb		*33,841	25,999	*25,076	17,672	*20,831	13,014	18,435	10,014	17,540	9,527	31.0	
1.5	kg		*17,566	10,950	*12,641	7,561	*10,145	5,655	8,227	4,423	7,730	4,164	9.4	
5'	lb		*38,727	24,140	*27,869	16,669	*22,365	12,466	18,138	9,750	17,041	9,179	31.0'	
0	kg		*18,247	10,603	*13,353	7,276	10,504	5,478	8,137	4,343	7,899	4,225	9.2	
0'	lb		*40,228	23,376	*29,438	16,040	23,158	12,078	17,940	9,574	17,414	9,315	30.0'	
-1.5	kg	*15,985	*15,985	*17,779	10,557	*13,353	7,170	10,421	5,407		8,513	4,523	8.7	
-5'	lb	*35,241	*35,241	*39,197	23,274	*29,438	15,806	22,975	11,921		18,769	9,972	29.0'	
-3.0	kg	*22,032	20,293	*16,332	10,696	*12,505	7,224	*9,673	5,472		*8,909	5,161	7.9	
-10'	lb	*48,573	44,739	*36,005	23,580	*27,569	15,926	*21,326	12,065		*19,641	11,378	26.0'	
-4.5	kg	*17,734	*17,734	*13,554	11,022	*10,284	7,469				*8,699	6,542	6.7	
-15'	lb	*39,098	*39,098	*29,882	24,299	*22,673	16,466				*19,177	14,423	22.0'	

LIFTING CAPACITY

936FN with 600 mm (24") Shoes, 6,400 mm (21') Boom, 2,900 mm (9'6") Arm

Conditions

A: Load radius
B: Load point height
C: Lifting capacity rating
Cf: Rating loads over front
Cs: Rating loads over side or 360°

Boom length: 6,400 mm (21')
Arm length: 2,900 mm (9'6")
Shoes: 600 mm (24")
Bucket: None
Counterweight: 7,700 kg



B (m/ft)	3 m (10')		4.5m (15')		6 m (20')		7.5 (25')		9 (30')		MAX REACH		A (m/ft)		
	Cf	Cs	Cf	Cs	Cf	Cs	Cf	Cs	Cf	Cs	Cf	Cs			
6.0	kg						*8,501	6,213			*8,407	5,359	8.2		
20'	lb						*18,740	13,698			*18,534	11,815	27.0'		
4.5	kg				*12,911	12,547	*10,290	8,316	*8,982	6,020		*8,419	4,702	8.8	
15'	lb				*28,464	27,661	*22,686	18,333	*19,802	13,272		*18,561	10,365	29.0'	
3.0	kg				*15,911	11,357	*11,677	7,791	*9,664	5,763	8,210	4,441	8,073	4,367	9.1
10'	lb				*35,077	25,038	*25,743	17,177	*21,306	12,705	18,100	9,791	17,798	9,627	30.0'
1.5	kg				*17,828	10,584	*12,833	7,353	*10,290	5,525	8,094	4,338	7,968	4,273	9.1
5'	lb				*39,304	23,334	*28,292	16,211	*22,685	12,180	17,844	9,563	17,566	9,421	30.0'
0	kg				*18,167	10,326	*13,403	7,098	10,325	5,366		8,151	4,340	8.9	
0'	lb				*40,052	22,766	*29,548	15,649	22,764	11,830		17,970	9,567	29.0'	
-1.5	kg	*16,449	*16,449	*17,457	10,338	*13,246	7,025	10,272	5,320		8,819	4,662	8.4		
-5'	lb	*36,265	*36,265	*38,487	22,790	*29,203	15,488	22,646	11,729		19,442	10,278	28.0'		
-3.0	kg	*20,689	20,009	*15,796	10,522	*12,199	7,118				*9,285	5,436	7.5		
-10'	lb	*45,612	44,111	*34,823	23,197	*26,895	15,693				*20,471	11,985	25.0'		
-4.5	kg	*16,171	*16,171	*12,694	10,908	*9,507	7,437				*8,760	7,025	6.3		
-15'	lb	*35,650	*35,650	*27,984	24,048	*20,960	16,396				*19,313	15,488	21.0'		

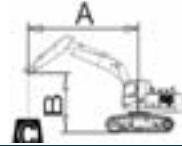


LIFTING CAPACITY

936FN with 700 mm (28") Shoes, 6,400 mm (21') Boom, 2,900 (9'6") mm Arm **Conditions**

A: Load radius
B: Load point height
C: Lifting capacity rating
Cf: Rating loads over front
Cs: Rating loads over side or 360°

Boom length: 6,400 mm (21')
Arm length: 2,900 mm (9'6")
Shoes: 700 mm (28")
Bucket: None
Counterweight: 7,700 kg



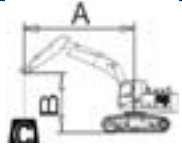
B (m/ft)	3 m (10')		4.5m (15')		6 m (20')		7.5 (25')		9 (30')		MAX REACH		A (m/ft)
	Cf	Cs	Cf	Cs	Cf	Cs	Cf	Cs	Cf	Cs	Cf	Cs	
6.0	kg						*8,501	6,315			*8,407	5,451	8.2
20'	lb						*18,740	13,921			*18,534	12,016	27.0'
4.5	kg		*12,911	12,740	*10,290	8,449	*8,982	6,121			*8,419	4,786	8.8
15'	lb		*28,464	28,088	*22,686	18,626	*19,802	13,495			*18,561	10,550	29.0'
3.0	kg		*15,911	11,550	*11,677	7,924	*9,664	5,864	8,340	4,523	8,201	4,448	9.1
10'	lb		*35,077	25,464	*25,743	17,470	*21,306	12,928	18,387	9,971	18,081	9,805	30.0'
1.5	kg		*17,828	10,777	*12,833	7,486	*10,290	5,626	8,224	4,420	8,096	4,354	9.1
5'	lb		*39,304	23,760	*28,292	16,504	*22,685	12,404	18,131	9,744	17,849	9,599	30.0'
0	kg		*18,167	10,520	*13,403	7,231	10,491	5,467			8,283	4,423	8.9
0'	lb		*40,052	23,192	*29,548	15,942	23,130	12,054			18,261	9,750	29.0'
-1.5	kg	*16,449	*16,449	*17,457	10,531	*13,246	7,158	10,438	5,422		8,961	4,751	8.4
-5'	lb	*36,265	*36,265	*38,487	23,217	*29,203	15,781	23,012	11,953		19,756	10,473	28.0'
-3.0	kg	*20,689	20,363	*15,796	10,715	*12,199	7,251				*9,285	5,537	7.5
-10'	lb	*45,612	44,892	*34,823	23,623	*26,895	15,986				*20,471	12,208	25.0'
-4.5	kg	*16,171	*16,171	*12,694	11,101	*9,507	7,570				*8,760	7,150	6.3
-15'	lb	*35,650	*35,650	*27,984	24,474	*20,960	16,689				*19,313	15,764	21.0'

LIFTING CAPACITY

936FN with 600 mm (24") Shoes, 6,400 mm (21') Boom, 2,600 mm (8'6") Arm **Conditions**

A: Load radius
B: Load point height
C: Lifting capacity rating
Cf: Rating loads over front
Cs: Rating loads over side or 360°

Boom length: 6,400 mm (21')
Arm length: 2,600 mm (8'6")
Shoes: 600 mm (24")
Bucket: None
Counterweight: 7,700 kg



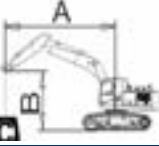
B (m/ft)	3 m (10')		4.5m (15')		6 m (20')		7.5 (25')		MAX REACH		A (m/ft)	
	Cf	Cs	Cf	Cs	Cf	Cs	Cf	Cs	Cf	Cs		
6.0	kg				*9,545	8,684	*8,842	6,158	*8,789	5,647	7.9	
20'	lb				*21,042	19,146	*19,494	13,577	*19,377	12,450	26.0'	
4.5	kg		*13,533	12,314	*10,644	8,227	*9,249	5,979	*8,775	4,937	8.5	
15'	lb		*29,835	27,147	*23,465	18,138	*20,391	13,182	*19,347	10,884	28.0'	
3.0	kg		*16,443	11,097	*11,956	7,701	*9,869	5,729	8,474	4,576	8.8	
10'	lb		*36,252	24,464	*26,359	16,977	*21,758	12,630	18,683	10,088	29.0'	
1.5	kg		*18,007	10,412	*12,995	7,281	*10,420	5,502	8,360	4,474	8.8	
5'	lb		*39,699	22,955	*28,650	16,052	*22,973	12,130	18,430	9,864	29.0'	
0	kg		*17,988	10,251	*13,419	7,057	10,321	5,362	8,563	4,549	8.6	
0'	lb		*39,656	22,600	*29,585	15,558	22,754	11,822	18,878	10,028	28.0'	
-1.5	kg	*16,810	*16,810	*17,057	10,318	*13,103	7,020	10,303	5,346	9,304	4,905	8.1
-5'	lb	*37,059	*37,059	*37,605	22,747	*28,888	15,476	22,713	11,787	20,513	10,815	27.0'
-3.0	kg	*19,213	*19,213	*15,194	10,548	*11,840	7,157			*9,429	5,770	7.2
-10'	lb	*42,357	*42,357	*33,497	23,255	*26,104	15,779			*20,787	12,720	24.0'
-4.5	kg			*11,732	11,006					*8,979	7,889	5.8
-15'	lb			*25,865	24,264					*19,796	17,392	19.0'

LIFTING CAPACITY

936FN with 700 mm (28") Shoes, 6,400 mm (21') Boom, 2,600 mm (8'6") Arm **Conditions**

A: Load radius
B: Load point height
C: Lifting capacity rating
Cf: Rating loads over front
Cs: Rating loads over side or 360°

Boom length: 6,400 mm (21')
Arm length: 2,600 mm (8'6")
Shoes: 700 mm (28")
Bucket: None
Counterweight: 7,700 kg



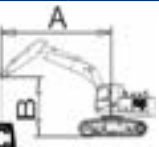
B (m/ft)	3		4.5		6		7.5		MAX REACH		A (m/ft)	
	Cf	Cs	Cf	Cs	Cf	Cs	Cf	Cs	Cf	Cs		
6.0	kg				*9,545	8,817	*8,842	6,260	*8,789	5,742	7.9	
20'	lb				*21,042	19,439	*19,494	13,800	*19,377	12,660	26.0'	
4.5	kg		*13,533	12,507	*10,644	8,360	*9,249	6,081	*8,775	5,024	8.5	
15'	lb		*29,835	27,573	*23,465	18,432	*20,391	13,405	*19,347	11,077	28.0'	
3.0	kg		*16,443	11,290	*11,956	7,834	*9,869	5,830	8,608	4,660	8.8	
10'	lb		*36,252	24,890	*26,359	17,271	*21,758	12,853	18,978	10,273	29.0'	
1.5	kg		*18,007	10,606	*12,995	7,414	*10,420	5,603	8,494	4,558	8.8	
5'	lb		*39,699	23,381	*28,650	16,345	*22,973	12,353	18,725	10,049	29.0'	
0	kg		*17,988	10,444	*13,419	7,190	10,487	5,464	8,701	4,635	8.6	
0'	lb		*39,656	23,026	*29,585	15,852	23,120	12,045	19,182	10,218	28.0'	
-1.5	kg	*16,810	*16,810	*17,057	10,511	*13,103	7,153	*10,338	5,448	*9,336	4,998	8.1
-5'	lb	*37,059	*37,059	*37,605	23,173	*28,888	15,769	*22,792	12,010	*20,582	11,019	27.0'
-3.0	kg	*19,213	*19,213	*15,194	10,742	*11,840	7,290			*9,429	5,876	7.2
-10'	lb	*42,357	*42,357	*33,497	23,681	*26,104	16,072			*20,787	12,955	24.0'
-4.5	kg			*11,732	11,199					*8,979	8,027	5.8
-15'	lb			*25,865	24,690					*19,796	17,698	19.0'

LIFTING CAPACITY

939FN with 600 mm (24") Shoes, 6,400 mm (21') Boom, 3,200 mm (10'6") Arm **Conditions**

A: Load radius
B: Load point height
C: Lifting capacity rating
Cf: Rating loads over front
Cs: Rating loads over side or 360°

Boom length: 6,400 mm (21')
Arm length: 3,200 mm (10'6")
Shoes: 600 mm (24")
Bucket: None
Counterweight: 8,500 kg



B (m/ft)	3 m (10')		4.5m (15')		6 m (20')		7.5 (25')		9 (30')		MAX REACH		A (m/ft)		
	Cf	Cs	Cf	Cs	Cf	Cs	Cf	Cs	Cf	Cs	Cf	Cs			
6.0	kg						*8,170	6,521			*8,052	5,314	8.5		
20'	lb						*18,012	14,376			*17,751	11,715	28.0'		
4.5	kg						*9,921	8,738	*8,711	6,318	*8,103	4,773	*7,770	4,686	9.1
15'	lb						*21,871	19,265	*19,204	13,930	*17,863	10,523	*17,129	10,330	30.0'
3.0	kg			*15,350	12,083	*11,374	8,215	*9,449	6,055	*8,377	4,665	8,143	4,440	9.3	
10'	lb			*33,841	26,638	*25,076	18,112	*20,831	13,350	*18,467	10,285	17,952	9,788	31.0	
1.5	kg			*17,566	11,240	*12,641	7,760	*10,145	5,807	8,422	4,545	7,914	4,280	9.4	
5'	lb			*38,727	24,779	*27,869	17,109	*22,365	12,801	18,568	10,021	17,448	9,437	31.0'	
0	kg			*18,247	10,893	*13,353	7,475	*10,575	5,630	8,332	4,466	8,089	4,345	9.2	
0'	lb			*40,228	24,016	*29,438	16,480	*23,313	12,413	18,370	9,845	17,832	9,579	30.0'	
-1.5	kg	*15,985	*15,985	*17,779	10,847	*13,353	7,369	*10,532	5,559			8,717	4,651	8.7	
-5'	lb	*35,241	*35,241	*39,197	23,913	*29,438	16,246	*23,220	12,256			19,219	10,254	29.0'	
-3.0	kg	*22,032	20,824	*16,332	10,986	*12,505	7,423	*9,673	5,624			*8,909	5,304	7.9	
-10'	lb	*48,573	45,910	*36,005	24,219	*27,569	16,366	*21,326	12,400			*19,641	11,693	26.0'	
-4.5	kg	*17,734	*17,734	*13,554	11,312	*10,284	7,668					*8,699	6,716	6.7	
-15'	lb	*39,098	*39,098	*29,882	24,939	*22,673	16,906					*19,177	14,807	22.0'	

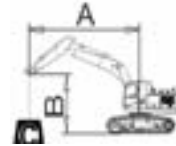


LIFTING CAPACITY

939FN with 700 mm (28") Shoes, 6,400 mm (21') Boom, 3,200 mm (10'6") Arm **Conditions**

A: Load radius
 B: Load point height
 C: Lifting capacity rating
 Cf: Rating loads over front
 Cs: Rating loads over side or 360°

Boom length: 6,400 mm (21')
 Arm length: 3,200 mm (10'6")
 Shoes: 700 mm (28")
 Bucket: None
 Counterweight: 8,500 kg




B (m/ft)	3 m (10')		4.5m (15')		6 m (20')		7.5 (25')		9 (30')		MAX REACH		A (m)	
	Cf	Cs	Cf	Cs	Cf	Cs	Cf	Cs	Cf	Cs	Cf	Cs		
6.0	kg						*8,170	6,622			*8,052	5,401	8.5	
20'	lb						*18,012	14,599			*17,751	11,908	28.0'	
4.5	kg					*9,921	8,871	*8,711	6,420	*8,103	4,855	*7,770	4,767	9.1
15'	lb					*21,871	19,558	*19,204	14,153	*17,863	10,704	*17,129	10,509	30.0'
3.0	kg		*15,350	12,276	*11,374	8,348	*9,449	6,157	*8,377	4,747	*8,231	4,519	9.3	
10'	lb		*33,841	27,065	*25,076	18,405	*20,831	13,573	*18,467	10,465	*18,146	9,962	31.0	
1.5	kg		*17,566	11,433	*12,641	7,893	*10,145	5,908	8,552	4,627	8,037	4,358	9.4	
5'	lb		*38,727	25,205	*27,869	17,402	*22,365	13,025	18,855	10,201	17,719	9,608	31.0'	
0	kg		*18,247	11,087	*13,353	7,608	*10,575	5,732	8,463	4,547	8,215	4,425	9.2	
0'	lb		*40,228	24,442	*29,438	16,773	*23,313	12,636	18,657	10,025	18,111	9,755	30.0'	
-1.5	kg	*15,985	*15,985	*17,779	11,040	*13,353	7,502	*10,532	5,661		*8,768	4,736	8.7	
-5'	lb	*35,241	*35,241	*39,197	24,339	*29,438	16,539	*23,220	12,479		*19,331	10,442	29.0'	
-3.0	kg	*22,032	21,178	*16,332	11,179	*12,505	7,556	*9,673	5,726		*8,909	5,399	7.9	
-10'	lb	*48,573	46,690	*36,005	24,646	*27,569	16,659	*21,326	12,623		*19,641	11,904	26.0'	
-4.5	kg	*17,734	*17,734	*13,554	11,505	*10,284	7,801				*8,699	6,832	6.7	
-15'	lb	*39,098	*39,098	*29,882	25,365	*22,673	17,199				*19,177	15,063	22.0'	

LIFTING CAPACITY

939FN with 600 mm (24") Shoes, 6,400 mm (21') Boom, 2,900 mm (9'6") Arm **Conditions**

A: Load radius
 B: Load point height
 C: Lifting capacity rating
 Cf: Rating loads over front
 Cs: Rating loads over side or 360°

Boom length: 6,400 mm (21')
 Arm length: 2,900 mm (9'6")
 Shoes: 600 mm (24")
 Bucket: None
 Counterweight: 8,500 kg



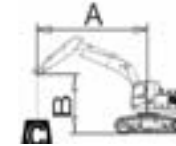
B (m/ft)	3 m (10')		4.5m (15')		6 m (20')		7.5 (25')		9 (30')		MAX REACH		A (m/ft)	
	Cf	Cs	Cf	Cs	Cf	Cs	Cf	Cs	Cf	Cs	Cf	Cs		
6.0	kg						*8,501	6,467			*8,407	5,587	8.2	
20'	lb						*18,740	14,257			*18,534	12,318	27.0'	
4.5	kg			*12,911	*12,911	*10,290	8,648	*8,982	6,273			*8,419	4,912	8.8
15'	lb			*28,464	*28,464	*22,686	19,066	*19,802	13,831			*18,561	10,828	29.0'
3.0	kg			*15,911	11,840	*11,677	8,124	*9,664	6,016	8,535	4,646	8,394	4,569	9.1
10'	lb			*35,077	26,104	*25,743	17,910	*21,306	13,263	18,817	10,242	18,505	10,073	30.0'
1.5	kg			*17,828	11,067	*12,833	7,686	*10,290	5,778	8,419	4,543	8,288	4,475	9.1
5'	lb			*39,304	24,399	*28,292	16,944	*22,685	12,739	18,561	10,015	18,273	9,867	30.0'
0	kg			*18,167	10,810	*13,403	7,431	*10,628	5,619			8,481	4,547	8.9
0'	lb			*40,052	23,831	*29,548	16,382	*23,430	12,389			18,697	10,024	29.0'
-1.5	kg	*16,449	*16,449	*17,457	10,821	*13,246	7,358	*10,454	5,574			*9,050	4,884	8.4
-5'	lb	*36,265	*36,265	*38,487	23,856	*29,203	16,221	*23,048	12,288			*19,951	10,767	28.0'
-3.0	kg	*20,689	*20,689	*15,796	11,005	*12,199	7,451					*9,285	5,689	7.5
-10'	lb	*45,612	*45,612	*34,823	24,262	*26,895	16,426					*20,471	12,543	25.0'
-4.5	kg	*16,171	*16,171	*12,694	11,391	*9,507	7,770					*8,760	7,338	6.3
-15'	lb	*35,650	*35,650	*27,984	25,113	*20,960	17,129					*19,313	16,178	21.0'

LIFTING CAPACITY

939FN with 700 mm (28") Shoes, 6,400 mm (21') Boom, 2,900 mm (9'6") Arm **Conditions**

A: Load radius
 B: Load point height
 C: Lifting capacity rating
 Cf: Rating loads over front
 Cs: Rating loads over side or 360°

Boom length: 6,400 mm (21')
 Arm length: 2,900 mm (9'6")
 Shoes: 700 mm (28")
 Bucket: None
 Counterweight: 8,500 kg



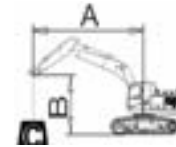
B (m/ft)	3 m (10')		4.5m (15')		6 m (20')		7.5 (25')		9 (30')		MAX REACH		A (m/ft)		
	Cf	Cs	Cf	Cs	Cf	Cs	Cf	Cs	Cf	Cs	Cf	Cs			
6.0	kg								*8,501	6,568			*8,407	5,679	8.2
20'	lb								*18,740	14,480			*18,534	12,519	27.0'
4.5	kg			*12,911	*12,911	*10,290	8,781	*8,982	6,375			*8,419	4,996	8.8	
15'	lb			*28,464	*28,464	*22,686	19,359	*19,802	14,054			*18,561	11,013	29.0'	
3.0	kg			*15,911	12,034	*11,677	8,257	*9,664	6,118	*8,565	4,727	*8,515	4,650	9.1	
10'	lb			*35,077	26,530	*25,743	18,203	*21,306	13,487	*18,883	10,422	*18,773	10,251	30.0'	
1.5	kg			*17,828	11,261	*12,833	7,819	*10,290	5,880	8,549	4,624	8,417	4,556	9.1	
5'	lb			*39,304	24,826	*28,292	17,237	*22,685	12,962	18,848	10,195	18,556	10,045	30.0'	
0	kg			*18,167	11,003	*13,403	7,564	*10,628	5,721			8,613	4,630	8.9	
0'	lb			*40,052	24,257	*29,548	16,675	*23,430	12,612			18,988	10,207	29.0'	
-1.5	kg	*16,449	*16,449	*17,457	11,014	*13,246	7,491	*10,454	5,675			*9,050	4,972	8.4	
-5'	lb	*36,265	*36,265	*38,487	24,282	*29,203	16,514	*23,048	12,511			*19,951	10,962	28.0'	
-3.0	kg	*20,689	*20,689	*15,796	11,198	*12,199	7,584					*9,285	5,791	7.5	
-10'	lb	*45,612	*45,612	*34,823	24,688	*26,895	16,719					*20,471	12,767	25.0'	
-4.5	kg	*16,171	*16,171	*12,694	11,585	*9,507	7,903					*8,760	7,463	6.3	
-15'	lb	*35,650	*35,650	*27,984	25,540	*20,960	17,422					*19,313	16,454	21.0'	

LIFTING CAPACITY

939FN with 600 mm (24") Shoes, 6,400 mm (21') Boom, 2,600 mm (8'6") Arm **Conditions**

A: Load radius
 B: Load point height
 C: Lifting capacity rating
 Cf: Rating loads over front
 Cs: Rating loads over side or 360°

Boom length: 6,400 mm (21')
 Arm length: 2,600 mm (8'6")
 Shoes: 600 mm (24")
 Bucket: None
 Counterweight: 8,500 kg



B (m/ft)	3 m (10')		4.5m (15')		6 m (20')		7.5 (25')		MAX REACH		A (m/ft)		
	Cf	Cs	Cf	Cs	Cf	Cs	Cf	Cs	Cf	Cs			
6.0	kg						*9,545	9,017	*8,842	6,412	*8,789	5,885	7.9
20'	lb						*21,042	19,879	*19,494	14,136	*19,377	12,975	26.0'
4.5	kg			*13,533	12,797	*10,644	8,560	*9,249	6,233	*8,775	5,156	8.5	
15'	lb			*29,835	28,213	*23,465	18,871	*20,391	13,740	*19,347	11,366	28.0'	
3.0	kg			*16,443	11,580	*11,956	8,033	*9,869	5,982	8,809	4,786	8.8	
10'	lb			*36,252	25,529	*26,359	17,710	*21,758	13,188	19,421	10,551	29.0'	
1.5	kg			*18,007	10,896	*12,995	7,613	*10,420	5,755	8,695	4,684	8.8	
5'	lb			*39,699	24,021	*28,650	16,785	*22,973	12,689	19,168	10,327	29.0'	
0	kg			*17,988	10,735	*13,419	7,390	*10,661	5,616	8,908	4,764	8.6	
0'	lb			*39,656	23,666	*29,585	16,291	*23,504	12,380	19,639	10,503	28.0'	
-1.5	kg	*16,810	*16,810	*17,057	10,801	*13,103	7,352	*10,338	5,600	*9,336	5,137	8.1	
-5'	lb	*37,059	*37,059	*37,605	23,812	*28,888	16,209	*22,792	12,346	*20,582	11,325	27.0'	
-3.0	kg	*19,213	*19,213	*15,194	11,032	*11,840	7,490			*9,429	6,036	7.2	
-10'	lb	*42,357	*42,357	*33,497	24,321	*26,104	16,512			*20,787	13,307	24.0'	
-4.5	kg			*11,732	11,489					*8,979	8,236	5.8	
-15'	lb			*25,865	25,329					*19,796	18,156	19.0'	

STANDARD EQUIPMENT

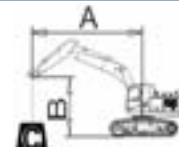
LIFTING CAPACITY

939FN with 700 mm (28") Shoes, 6,400 mm (21') Boom, 2,600 mm (8'6") Arm

A: Load radius
B: Load point height
C: Lifting capacity rating
Cf: Rating loads over front
Cs: Rating loads over side or 360°

Conditions

Boom length: 6,400 mm (21')
Arm length: 2,600 mm (8'6")
Shoes: 700 mm (28")
Bucket: None
Counterweight: 8,500 kg



B (m/ft)	A (Unit: m)											
	3 m (10')		4.5m (15')		6 m (20')		7.5 (25')		MAX REACH			
	Cf	Cs	Cf	Cs	Cf	Cs	Cf	Cs	Cf	Cs	A (m/ft)	
6.0	kg					*9,545	9,150	*8,842	6,513	*8,789	5,981	7.9
20'	lb					*21,042	20,172	*19,494	14,359	*19,377	13,185	26.0'
4.5	kg			*13,533	12,990	*10,644	8,693	*9,249	6,334	*8,775	5,243	8.5
15'	lb			*29,835	28,639	*23,465	19,165	*20,391	13,964	*19,347	11,559	28.0'
3.0	kg			*16,443	11,773	*11,956	8,166	*9,869	6,083	*8,865	4,870	8.8
10'	lb			*36,252	25,956	*26,359	18,004	*21,758	13,412	*19,545	10,736	29.0'
1.5	kg			*18,007	11,089	*12,995	7,746	*10,420	5,857	8,829	4,768	8.8
5'	lb			*39,699	24,447	*28,650	17,078	*22,973	12,912	19,464	10,512	29.0'
0	kg			*17,988	10,928	*13,419	7,523	*10,661	5,717	9,046	4,851	8.6
0'	lb			*39,656	24,092	*29,585	16,585	*23,504	12,604	19,943	10,694	28.0'
-1.5	kg	*16,810	*16,810	*17,057	10,994	*13,103	7,485	*10,338	5,701	*9,336	5,229	8.1
-5'	lb	*37,059	*37,059	*37,605	24,238	*28,888	16,502	*22,792	12,569	*20,582	11,529	27.0'
-3.0	kg	*19,213	*19,213	*15,194	11,225	*11,840	7,623			*9,429	6,142	7.2
-10'	lb	*42,357	*42,357	*33,497	24,747	*26,104	16,805			*20,787	13,541	24.0'
-4.5	kg			*11,732	11,683					*8,979	8,374	5.8
-15'	lb			*25,865	25,756					*19,796	18,462	19.0'

ENGINE SYSTEM

936F/936FN

939F/939FN

942F

Cummins L9 engine, Rate power 231kW, EPA Tier 4F/EU Stage V, turbocharged, 6 cylinder, 4 stroke, water cooled.

Engine overheat prevention system

Auto-idle speed control

Automatic engine shutdown

Radial seal air filters (primary and secondary filter)

Cleanable metal fuel tank

Fuel pre-filter with water separator and water detection

Electric fuel lifting pump

Remote engine oil filter

Variable fan with viscous clutch

Removable Radiator dustproof net

Air conditioner compressor belt automatic tense

Cold starting kit for -20° C

Engine oil low pressure protection

Automatic warming up

Coolant level warning

Supercharger thermal protection

DEF level alarm

Fuel pressure differential gauge

Air prefilter

Warning for air filter block

Drain coolant at outer side of radiator

Coolant level observed on ground

Easy to drain engine oil (bottom cover with drain valve)

Fuel shut-off valve

Water drainable fuel tank(with water valve)

HYDRAULIC SYSTEM

936F/936FN

939F/939FN

942F

Full electric control hydraulic system

3-power modes (Power, Standard, Economy)

Power boost function

Pilot control shut-off lever

Pilot accumulator

Low force joystick

Automatic swing parking brake

Swing with anti-reverse function

Boom and arm regeneration circuits
 Boom and arm holding valves
 Automatic two-speed travel
 Automatic travel parking brake
 Pressure checking port for main pump
 MCV with auxiliary valve
 Boom and arm down lock valve
 Hydraulic oil level visible
 Hydraulic pump with PTO port

OPERATOR STATION

936F/936FN

939F/939FN

942F

Pressurized and sealed cab with all-around visibility
 ROPS certified cab
 Lower windshield can be removable
 Openable front windshield with assist device
 Large roof window with slide sliding sun visor
 Air suspension deluxe seat (with heater and head rest) +retractable seat belt (75 mm [3 in] width, red colour, with green alarm lamp)
 Consoles and seat height adjustable follow-up
 8 inches high resolution LCD touch screen + integrated control panel
 Washable floor mat
 Fire extinguisher
 Safety hammer for cab evacuation
 Green safety glass
 Cab interior lighting
 Cab emergency exit
 Fire extinguisher bracket
 Travel control pedals with removable hand levers
 Sliding upper door window(left-hand cab door)
 Rear view mirror, mounted in the LH cab

ELECTRICAL SYSTEM

936F/936FN

939F/939FN

942F

Monitor: working mode, working hour, water temperature, oil temperature, fuel level, DEF level, fuel consumption, rear vision, fault code, work condition etc. machine information.
 Warn: low engine oil pressure, low fuel level, air filter clog, machine overheat, maintenance remind etc.
 Front window wiper with time adjustable intermittent feature
 AM/FM radio with auxiliary input
 Blue tooth
 Working lights close time delay by programmable
 Cab interior decoration lights close time delay by programmable
 2 stereo speakers
 Battery disconnect switch
 Emergency stop on ground
 Set password for auxiliary hydraulic-flow adjustments
 Work tool flow and pressure programmable memories
 Front window wiper gating switch

Instantaneous fuel consumption display
 2 Batteries
 Language display (full graphic and full color display)
 Engine auto pre-heater
 Plateau mode (plateau adaptive function)
 Travel alarm
 Auto power boost

UNDERCARRIAGE

936F/936FN

939F/939FN

942F

Guard package: HD bottom guard
 Rollers, bottom - 9 each side
 Rollers, top - 2 each side
 Centralized lubrication for swing bearing
 Towing eye on base frame
 Guard package: Heavy-duty travel motor guard

UPPER STRUCTURE

936F/936FN

939F/939FN

942F

Frame handrail
 Punched metal anti-slip plates
 Foot pedal is in engine room
 Engine chamber and main pump chamber separated by fire board
 Side door brace automatically lock
 Rearview mirror mounted in the RH machine
 Lockable tool box
 Grease point in front of platform
 Counterweight reserved rear view instrument installation

DIGGING EQUIPMENT

936F/936FN

939F/939FN

942F

6400 mm boom
 Arm front end with guard bars
 Manual centralized lubrication on boom
 Manual centralized lubrication on arm
 Hammer pipe support
 Quick coupler pipe support

AIR CONDITIONING SYSTEM

936F/936FN

939F/939FN

942F

Automatic air conditioner, heater, defroster
 Refrigerant observation hole on side
 Wind renewal function

SERVICE AND MAINTENANCE

936F/936FN

939F/939FN

942F

Maintenance tool kit
 Maintenance parts package
 Data diagnostic port
 Self-diagnostic system

OPTIONAL EQUIPMENT

ENGINE SYSTEM

Electric re-fueling pump with auto shutoff
Cold starting kit for -35° C

HYDRAULIC SYSTEM

Hand proportional control auxiliary dual way pipes
Hand proportional control auxiliary swing pipes
PTO max flow with monitor control
Auxiliary single-double hydraulic lines exchange on the monitor
Auxiliary dual pipe flow & pressure adjustable
High pressure quick-coupler pipes
Low pressure quick-coupler pipes
Attachment oil drain line
Additional filter for breaker piping
Boom drift function (Use with holding valves)
Straight travel with one pedal
Control pattern-change valve (BHL-SAE)
Long-life hydraulic oil (replacement cycle 5000h)
PTO pump pipeline
Hammer piping pipeline

OPERATOR STATION

Openable cab front guard
Cab front guard and top guard (falling object protective structure)
Transparent cab skylight
Sunscreen
Left armrest box can be reversed
2 alarm mounted bracket on cab roof

ELECTRICAL SYSTEM

Overload warning device
Travel alarm
Rotating beacon
Quicker-coupler opening warning
Starting code
Right platform working light
4 boom working lights
360° view

Machine rear lighting
Work lights: long strip LED light in front and rear cab
Capability to electrically connect beacon
12V power supply

UNDERCARRIAGE

	936F/936FN	939F/939FN	942F
942F undercarriage (Length to center of Rollers 42500mm, Track Gauge 2740mm)	-	-	
Heavy duty undercarriage (Length to center of Rollers 4140mm,Track Gauge 2590mm)			-
600mm track-shoes with triple grousers			
700mm track-shoes with triple grousers			
800mm track-shoes with triple grousers			
900mm track-shoes with triple grousers			
Auxiliary tarck footrest			
2 piece track guards (each side)			-
3 piece track guards (each side)			-

UPPER STRUCTURE

	936F/936FN	939F/939FN	942F
Guard rails of upper frame sides			
Guard fence of upper frame around			
Assembly Upper frame guard	-		
Reinforced frame undercover			
7700kg counterweight		-	-
8500 kg counterweight	-		-
9000 kg counterweight	-	-	

DIGGING EQUIPMENT

	936F/936FN	939F/939FN	942F
2600mm short reach arm			
2900mm short reach arm			
3200 mm arm			
Bucket cylinder rod protect	-		
1.8 m ³ general bucket		-	-
2.0 m ³ general bucket (need 2600mm arm or 2900mm arm)	-		-
2.1 m ³ general bucket	-	-	

SERVICE AND MAINTENANCE

iLink



Guangxi LiuGong Machinery Co., Ltd.
No. 1 Liutai Road, Liuzhou, Guangxi 545007, PR China
T: +86 772 388 6124 E: overseas@liugong.com
www.liugong.com

Like and follow us:



LG-PB-936F 936FN 939F 930FN 942F-Stage V-WW-A4-032024-ENG

The LiuGong series of logos herein, including but not limited to word marks, device marks, letter of alphabet marks and combination marks, as the registered trademarks of Guangxi LiuGong Group Co., Ltd. are used by Guangxi LiuGong Machinery Co., Ltd. with legal permission, and shall not be used without permission. Specifications and designs are subject to change without notice. Illustrations and pictures may include optional equipment and may not include all standard equipment. Equipment and options varies by regional availability.